



Alfred Proves We're Stronger Together

Resilient Uki Inc

Ex-Cyclone Alfred's recent, unpredictable journey down the east coast resulted in more disruption than great destruction locally.

It also managed to produce a fair amount of anxiety within the community. Alfred's protracted, unpredictable approach provided a long lead time as we watched the cyclone approach, eventually crossing the coast near Bribie Island around 9pm on Saturday 8th March. This allowed most people to channel any anxious energy into action. It was fantastic to see the level of individual and community preparedness.

Unlike 2022, where flooding, landslides and road access were our main concerns, Alfred produced fallen trees and flooded causeways, plus power and communication outages. Most households in Uki and surrounds experienced at least three-four days without power, while Hazelbrook Rd, Doon Doon and several houses in Terragon experienced outages of eight to nine days.

Resilient Uki (RUKI) has recently surveyed people asking what went well for them in this weather event and what our community could improve on for future events.

Resoundingly, people said the game changer this time was communication and connection between neighbours. Part of this was via emerging neighbourhood social media threads on WhatsApp or Messenger.

Also, this was the first real test run for the community UHF radio network, which has been gradually growing since RUKI's Neighbourhood Project in 2023. The network kept neighbours connected and allowed for twice-daily radio check-ins to share information.



RUKI's trailer generator, donated by Tweed Shire Council, provided power at the community hub

This information was used primarily to create situation reports that gave an accurate picture of emerging problems. These reports were then passed on to responding agencies like SES and Essential Energy.

We want to emphasise that the UHF system is an informal network that is only used when conventional communications fail. Emergencies, power outages, blocked roads and driveways should always be reported, in the first instance, by phone or internet if these services are functional.

The Uki School of Arts was a hub of community connection and communications after being designated an official evacuation

centre by the Department of Communities and Justice (DCJ) on 5th March. This was helped by continuous power and communications that RUKI supplied via a trailered generator (that Tweed Shire Council donated) and satellite internet that volunteers installed on the building's roof (funded by Mandy Nolan and Ellen Briggs' 'Women Like Us' event).

The evacuation centre catered to the community's needs and housed people until it was closed on Monday 10th March. Even after the evacuation centre closed, it was good to see so many people coming together to charge devices and use the internet service that remained available in subsequent days.

Alfred proved a good test run for our community and while there were great preparations and a concerted, co-ordinated community response there are still improvements that can be made. RUKI is facilitating more conversations and training in the community, but as we hope this event showed, we are not a response agency. We're just members of the community like you, and our goal is to get neighbours helping neighbours.

With changing climatic conditions, we can expect more environmental calamities. We are stronger together, so let's all work within our own households and neighbourhoods and as a whole community to improve existing systems that give us all a greater capacity to prepare, respond and recover.



From the Editor

Welcome to Issue 140

Many of us are likely feeling a little battle weary after Ex Tropical Cyclone Alfred threatened to gatecrash communities that are still recovering from the aftermath of the 2022 floods.

It was a huge relief that Alfred arrived late to the party and that his reputation as an out of control hooligan proved to be a bit overblown, along with quite a few trees, mind.

We are very grateful that we had time to prepare for his arrival and for the valiant efforts of our emergency services, SES and our amazing community touchstone, Resilient Uki.

Essential Energy also did an amazing job restoring power to an estimated 43,000 homes and businesses in northern New South Wales that experienced outages, including many in the Uki area.

It seems that there have been many lessons and learnings from previous flood events that RUKI and the broader community put into

action to great effect. Helped along with the kindness, comradery and cooperation from our community.

There is also a beautiful article by Heather McClelland about the power of movement as therapy and lots of exciting music, art, film and theatre events to immerse in, including our favourite annual Easter art happening, Images of Uki.

Kick off your shoes, pour yourself a cup of your choosing and pat yourself on the back for a job well done as you drink in this issue.

Andia

ADVERTISING

Business card size	\$30	Half page	\$100	All Advertisers will receive an invoice Advertising revenue helps fund the Uki News
Quarter page	\$60	Full page	\$200	

The Uki News is a bimonthly, free publication by the Uki Village and Districts Residents Association (UKIRA).

Disclaimer: the opinions and views expressed in this newsletter may not reflect those of the Uki News or of UKIRA.

Uki News is printed by Uki Community Technology Centre (aka CTC) at the Buttery building. It is delivered to most households on the South Arm of the Tweed River. Copies are also available at various local outlets, including the Uki Supermarket.

Letters To The Editor

"Never doubt that a small group of thoughtful committed individuals can change the world. In fact, it's the only thing that ever has." Margaret Mead

We'd love to hear from you.

Share your ideas, events, hopes and inspirations for all things Uki with us.

Contact Uki News: theukinews@hotmail.com



CTC @ Uki
Community Technology Centre
The Buttery
1454 Kyogle Rd Uki
P.O. Box 3404 Uki NSW 2484
(02) 6679 5399
ctc.uki.nsw@gmail.com
ABN: 69 292 130 424

- @ Print Shop
- @ IT Assistance & Tuition
- @ Internet, Adobe Suite
- @ Office Services
- @ Web Design

Thanks to CTC for their amazing work printing Uki News, as we celebrate 140 issues and 24 years of community news.



Smallbizfit
Tailored business systems saving you time & money

IT Technology | Marketing | Online Activities

Me | You

Geoffrey Colwill
0427 701 892
geoffrey@smallbizfit.com.au

MYOB Certified Consultant
PayDirect | xero

"We work together and I complement other business advisors".

CONTRIBUTION

Friday 16 May, 2025	June/July
Friday 18 July, 2025	Aug/Sept
Friday 19 Sep, 2025	Oct/Nov
Friday 14 Nov, 2025	Dec/Jan



UKI AUTOMOTIVE
ACN 638 213 171

Brendon Veares
Matt Clark
DIRECTORS

Ph: (02) 6679 5225 A/Hrs: 0468 937 090
1504 Kyogle Rd, Uki, NSW 2484



SCOTTY LIGHT

Electrical & Solar Contractor

OFF-GRID Solar Accredited
STC Rebates on Panels for OFF-GRID!
Grid Connect Solar (STC Rebates) & Batteries
New Builds & Renovations
Garden Lighting

Scott 0403302680 office@scottylight.com
NSW License 383418C

Thank you !

To all SES
volunteers
and to all in the
community for
your fantastic
disaster
preparedness
and cooperation.



Janelle Saffin MP
MEMBER FOR LISMORE
Lismore@parliament.nsw.gov.au
ph: 02 6621 3624



Authorised by Janelle Saffin MP. Funded using Parliamentary entitlements.

Lessons Learned Evident in the Lead up to Cyclone Alfred

Janelle Saffin MP , Member for Lismore

In early March, Northern NSW and Southern Queensland faced the threat of Cyclone Alfred, looming off the coast.

I want to comment on the incredible job that was done to prepare for this potential disaster. We have learned the lessons of 2022 and the preparation was very different.

This preparedness was at every level, from grass-roots members of the community, right through to our state and federal leaders. There was a big focus on safety.

Firstly, I want to thank the community. I commend Resilient Uki (RUKI) for the brilliant job it has done supporting the community to prepare for wild weather events. In the second-last edition of Uki News it had clear and practical advice and a preparation checklist, along with the link to RUKI's webpage with further resources. That proved very timely advice.

I dropped in on Mel Bloor and Brendan Esposito from RUKI and they gave me a debrief on how Uki fared during the event.

Uki News • ISSUE 140 • APRIL-MAY 2025

In Uki and across the region we saw that homes were prepped for high winds and potential flooding, people had their battery radios, their torches and some had generators ready. There were two-way radio networks in place.

People listened to the warnings and evacuation orders. Even if they didn't necessarily agree with the messages.

Businesses moved their stock and equipment, despite the cost involved of lost days of business in packing up and unpacking.

The SES was magnificent. I commend SES Commissioner Michael Wassing and the team locally, and acting Chief Superintendent Stewart Fisher flew in from Sydney.

I thank the RFS, the Fire and Rescue, Marine Rescue, VRA, Surf Lifesaving, Paramedics, and the Australian Army. I thank the truck drivers who worked hard to get supplies into towns.

Premier Chris Minns and NSW Emergency Services Minister Jihad Dib flew up on Wednesday 5th March and were hands-on in

Lessons Learned cont'd

Janelle Saffin MP, Member for Lismore

the preparation and stayed on through the weekend. The community greatly appreciated their presence.

Prime Minister Anthony Albanese came up during this time, as well as the Federal Emergency Management Minister, Jenny McAllister, the Special Envoy for Disaster Recovery, Senator Tony Sheldon, NSW Roads and Regional Transport Minister Jenny Aitchison, and Deputy Premier and Minister for Education and Early Childhood Prue Car.

I received regular briefings and updates from the SES, police and other combat agencies, and the message I gave to the community was to listen to their advice and be prepared for a rare, unpredictable weather event for our region.

The community listened and did their prep by securing their properties or businesses, and wherever possible, stayed at home and off the roads, waiting for the danger period to pass.

There were many acts of kindness, food drops, people taking in friends and family, neighbours helping neighbours.

The strong leadership, coordination of agencies, the regular briefings and updates, the community preparedness and cooperation, gave everyone confidence that systems were in place.

We haven't seen this level of preparedness before and everyone commented. As always, there is room for improvement.

There are issues that I will be following up on so we can continue to improve our readiness, response and recovery.



Left: Janelle Saffin MP in a debrief with Mel Bloor and Brendan Esposito from Resilient Uki.



Residential Community Clean Up Continues

A free shire-wide residential clean-up of green and hard waste continues following the impacts of Ex-Cyclone Alfred. The collection began on March 17 and will take a minimum of 8 weeks to complete.

The residential clean-up will be done suburb by suburb in the coming weeks. A weekly updated schedule of collections and FAQs is available via this link for FAQs and more details, visit: <https://brnw.ch/21wRy3O>

Green waste and hard waste will be collected by different trucks at different times so don't worry if one pile is taken away and the other remains - we'll get to both of them.

Our crews are working as quickly as possible. Thanks for your patience and cooperation by only placing legitimate cyclone-impacted waste on the kerb!



Uki Supermarket

Friendly service....

Groceries, Fruit & Veg
Gluten-free & Organic Products

Meat
Ice
Fuel
Gas

Open weekdays 7.30am-6pm
Sat & Sun 8am - 5pm
Main Street, Uki Ph: 6679 5136

resilientuki.org

Community for Community

Your key local resource for community preparedness and connection.
Let's work together.

Bushfire | Floods | Storms | Landslips | Heatwaves | Health & mental health | Animal care | Food security | and more.

RELATIONSHIP HEALTH

Eldership Pride: Dance Therapy in Uki

Heather McClelland

The high level of disabling trauma in our community after the 2022 floods was exacerbated recently by the lead up to Cyclone Alfred.

RUKI changed the game for Uki. With CB radio-connectedness the team supported our neighbourhoods. Scattered leaders stayed in touch with families and individuals in their areas. Medical emergencies etc were ably dealt with. RUKI's focus on kindness to one another highlights the benefits of generous connectivity in times of stress.

As a retired therapist who has worked with trauma all my working life, I highly recommend 'Just Dance Uki' in the hall every Friday morning. It creates the type of community that can go a long way to healing stress and even trauma. A 93-year-old friend of mine with a walker, loves to attend, drawn into multi-generational connectedness as she sways to the music.

Gathered community and the possibility of hugs and safe touch for a person reeling from a trauma-reaction is exactly what is needed.

Just Dance is a physical workout and since trauma lodges in the body, it is perfect. When you catch

yourself over-reacting or having difficulty catching your breath or experiencing waves of nausea or pain etc it can be a sign that earlier trauma is being triggered. Moving your body at such a time can bring immediate relief. Likewise grounding yourself and consciously feeling the way your feet touch the ground can help you calm yourself quickly. Focusing on your senses balances nervous system fight, flight and freeze.

At 'Just Dance' the music creates such focus.

How fortunate are we to live in our village with so many wonderful places to congregate: markets weekly and monthly, food and coffee hubs at Village and Co and the Post Office, the school, the church, sporting ground and the Mount Warning Pub.



Dancing up a storm. Local community members dance their troubles away at Just Dance each week at the Uki Hall

the Mount Warning Pub.

We enjoy music and art everywhere highlighted by regular art openings at Little Gallery, Art Post and the upcoming Easter art exhibition, 'Images of Uki'.

Trauma reactions may of course be triggered because of earlier life trauma. Therapists are available in and around Uki when symptoms of PTSD persist.



BUY DIRECT

UKI SAWMILL
TWEED VALLEY

UKI TIMBER YARD
Sawn & Dressed
Hardwood Timbers
Building Materials
Furniture
Landscaping
Fencing
Slabs

We Deliver

Email: uki.sawmill@westnet.com.au
www.ukisawmill.com.au

Phone: 6679 5116

Smiths Creek Road, Uki
After Hours 6679 5255

TWEED VALLEY Denture Clinic

- Full Dentures
- Full Dentures over Implants
- Partial Dentures
- Relines
- Repairs
- Mouthguards

Ian Kingston - Dental Prosthetist
131 Main Street, Murwillumbah,
Phone 6672 4618
(next to the Imperial Hotel, Wheelchair Access)

Images of Uki 15 years on

Julia Collingwood
.....

Images of Uki began in 2010 as part of the wonderful Ukitopia Festival. It has come a long way since those days but its mission has remained unchanged, it is still all about showcasing our rich local artistic talent.

From the very first show in 2010, it became apparent that there were an amazing number of artists in the area. The goal was, and has always been, to exhibit every artist that enters. Consequently, it was soon necessary to restrict entries to only artists who live in the 2484 postcode.

Another important caveat was that the local children should not be excluded, so an area for a children's exhibition became a permanent feature.

The opening of Images of Uki has always been a big event on the village calendar. Over the years, many magnificent musicians have performed at the openings, and of course there has always been a drink on offer.

This year's opening at 6pm on Easter Friday at the Uki Hall is shaping up to be another terrific event. Performing will be Glenn Brace, an excellent and popular guitarist from Murwillumbah. There will be also food and drink available generously donated by the Uki Supermarket and the Uki pub.

During Saturday and Sunday of the Easter weekend Nick Clow and Tomylee Billings will perform during the day.

One of the highlights of Images, which was introduced some years ago, is the People's Choice Award. This year the winning artist will receive a terrific set of chimes from The Tinker's Cuss.



Six artists out of the 10 People's Choice Award finalists 2024

Have Your Say on the Community's Response to XTC Alfred



While things are still fresh in our minds Resilient Uki (RUKI) would love to get your thoughts on what went well in our community's response to Cyclone Alfred, and what we all as a collective might be able to do better next time.

We do plan to organise some more comprehensive debrief sessions but for now, RUKI has created a very short, simple survey to capture your thoughts.

This survey is only for people who live in the 'Greater Uki' region, which encompasses:

- Mount Burrell
- Doon Doon, Midginbil, Commissioners Creek
- Kunghur, Kunghur Creek, and Terragon
- Byrrill Creek
- Between Uki and Terragon
- Uki Village
- Rowlands and Chowan Creek Roads
- Smiths Creek Road
- Braeside Drive, Bonnydoon Road, Meadow Place
- Dum Dum
- Mt Warning Road

The information gathered will be helpful to inform community, disaster relief and emergency management stakeholders.

Please visit the link either via our homepage or here <https://bit.ly/3RkCWfl> to complete the survey.



**UKI
GINGER
CO**

**Premium products made from ginger
grown and harvested in
Uki and the Tweed Valley**

Gluten Free - Vegan

Available at the Uki Supermarket



Andia Cally

April's Earth Song

Little Gallery artist Libby Jarasius's April exhibition "Singing up the Earth," a phrase coined by



Sky pots part of Libby Jarasius's April feature "Singing up the Earth".

inspirational ceramicist, Paulus Berensohn, features hand-built sculptural ceramics and wheel-thrown and altered functional and decorative wares.

The pieces showcase the malleability of clay and the transformation of mud to artworks.

Libby works intuitively, allowing her surroundings and the nature of the clay to inform her designs.

She experiments with the pushing and pulling of clay to it's limits, with surface design and multiple glazes, as a metaphor for the rhythms and complexities of life.

These playful asymmetrical forms are colourful, quirky, nature-inspired and honouring of our earth.

little gallery

Wed-Fri, 10-3PM

Sat-Sun, 9-2pm

The Buttery

1454 Kyogle Road UKI NSW 2484

littlegalleryuki@gmail.com

0422 727 947

where little things make big things happen



Wandering in May

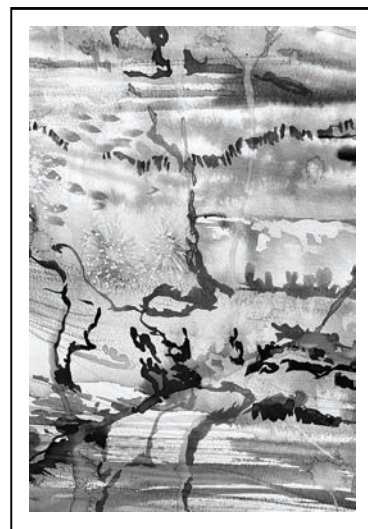
Sometimes we yearn for that feeling of freedom and escape. Local artist Jenny Sayer captures this sentiment in her upcoming exhibition, "Wandering."

In February this year Jenny embarked on a solo camping, kayaking, and painting trip, staying in NSW National Parks and heading down to Victoria before returning to Murwillumbah. Learning from other road trips that oils and glass don't travel well, her chosen medium was watercolour.

The freedom to start and finish works while camping in a tent, without long drying times and a lot of set up gave her a loose, colourful, dynamic format that could be added to when her trip was over. This resulted in some glass mosaic being added and a new coupling of mediums, satisfying her experimental urges.

Join us on Friday May 2nd, 6pm at Little Gallery, an artist-run space at Uki Buttery, for the opening night of "Wandering" and embark on a visual journey that will ignite your imagination.

The exhibition will be on display until the end of May, along with works from 11 other members of Little Gallery.



Above a preview of coming attractions from Jenny Sayer's upcoming exhibition Wandering, opens May 2nd at 6pm, Little Gallery.

Film fundraiser supports girls' education in Afghanistan

Penny Watsford



Uki Refugee Project would like to invite you to a screening of the film "My Favourite Cake" at The Citadel in Murwillumbah at 6pm on Sunday 4th May.

"My Favourite Cake" has been described as a romantic tragi/comedy. "One of the sweetest, most touching confections of the year."

The film is skilfully layered with recollections of what life in Iran was like pre-revolution, when women weren't mandated to wear hijabs and alcohol could be consumed freely, with people's current constricted lives that are constrained further by unspoken, oppressive rules that abound about gender – and this fear is an all-encompassing pall that blankets their every action.

The creators of the film, Maryam Moghaddam and Behtash Sanaeaha, were banned from travelling outside Iran after they were charged with making propaganda against the regime.

The film almost didn't get made. This is a fund raiser to support the education of girls in Afghanistan, who are forbidden to attend school.

To buy tickets click this link <https://events.humanitix.com/my-favourite-cake>



70-year-old Mahin, solitary until now, chooses to revive her love life. A chance encounter becomes an unforgettable evening in My Favourite Cake, special fundraiser screening at the Citadel, 6pm May 4, 2025.

THEATRE

The Great Divide

Ken Corbitt

Golden sands, turquoise waters and a lush green golf course – Penny Poulter leads an almost idyllic life in one of Australia's best kept secrets, Wallis Heads.

But when this hidden coastal gem is discovered by the ruthless and immensely wealthy Alex Whittle, ambitious plans to put the town firmly on the tourist map spark a bitter rivalry. Can this human bulldozer with money to burn ever be stopped?

From Don's Party and The Removalists through a half-century of powerful productions, David Williamson is Australia's most prolific playwright.

In his latest work, Williamson has penned The Great Divide, a new social commentary with wise-cracking wordplay on wealth, inequality and human greed.

The Great Divide will show at Murwillumbah Civic Centre on May 16-June 1. Tickets from \$22 adult at www.murwillumbahtheatrecompany.com.au.



Uki Buttery Bazaar Entertainment

Sanne Grace Kenna

8am - 2pm

To book a stall at the monthly Uki Buttery Bazaar please contact the Market Coordinator on 0487 329 150

Uki Buttery Bazaar Market

PLENTY OF PARKING AT RAINBOW BRIDGE AND SWEETNAM PARK

APRIL Buttery Bazaar



Sunday 20 APRIL

Martin Lartigau

Martin is a talented guitarist and vocalist whose performances blend the soul of contemporary flamenco, the intricacies of fingerstyle guitar, and the depth of blues.

Martin has a passion for pushing musical boundaries and continuously hones his craft. He dedicates himself to refining techniques that allow him to seamlessly combine complex rhythms and melodies. Each piece is crafted with precision, creating rich and dynamic sounds that captivate audiences.



MARTIN LARTIGAU



THE BIG BLUE

The Big Blue

Come and enjoy The Big Blue duo on Easter Sunday morning. A sweet sounding vocal & guitar duo, Kylie and Paul have been playing around the area for a few years & are now Uki locals. Putting together a set of beautiful songs that we like from the 1930s till now for your listening pleasure.



MAY Buttery Bazaar

Sunday 18 MAY



LOREN & SANNE

Loren & Sanne

The hills are alive with the sound of Loren and Sanne weaving harmony and rhythm, wrapped up in songs for the sun, the moon, the mountains and life's meandering journey.

With sixty odd years of combined performing experience, Loren and Sanne should probably be auditioning for the Rolling Stones, but instead they'd rather play some heart-felt original songs with a few fun classics woven in. A melodic playground of harmonies and beats. Joined by special guests.

Ladi Abundance

Australian--born, Northern Rivers-based indie artist Ladi Abundance draws on diverse influences from jazz, electro-pop, R&B, and soul.

A vocalist, pianist, and producer, she weaves live looping and vocal harmonies with self-produced electronic beats and live instrumental pieces to create melodic, harmony-rich, and dramatic downtempo urban grooves.



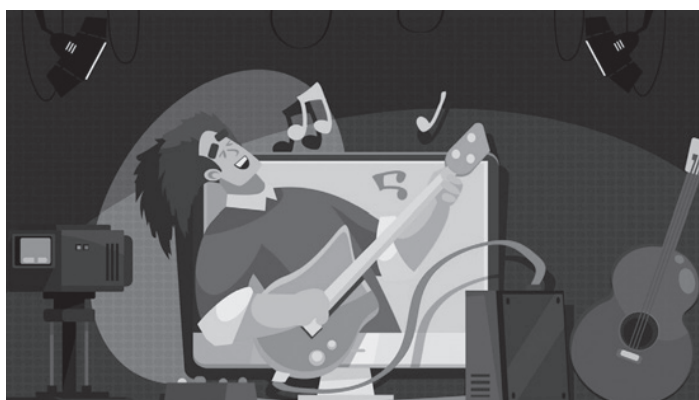
LADI ABUNDANCE

Technology Enabled Remote Music Systems

Louise Bally

Until recently, problems with latency prevented musicians from playing together remotely. Those few milliseconds of lagging made it painful to collaborate and practice over the Internet.

Some newer programs have revolutionised the possibilities for musicians who are isolated due to remoteness and health restrictions. Both paid and open source setups now exist to enable remote practice sessions, live music lessons, studio like collaborations in real-time or asynchronously. Below are some options to explore.



JamKazam, a program designed specifically for musicians to play live music together over the internet, with minimal latency. Featuring audio and video streaming, and the ability to record sessions. It supports both live jam sessions and rehearsal environments. Musicians set up a profile, connect via audio interfaces, and create jam sessions to play with others remotely. JamKazam is recommended for real-time band practice, music lessons or casual jam sessions, it requires reliable internet.

Endless is an app focused on real-time collaborative music-making, perfect for jamming or improvising with others, it features Loop-based, real-time collaboration, easy integration with mobile devices

and DAWs, and a social media plugin so users share content. Endless is perfect for musicians to create and share loops, building on each other's ideas in real-time locally or around the world. Endless is recommended for spontaneous electronic and experimental musicians.

Soundjack is another low-latency, high-quality platform for remote music sessions. It's great for real-time jamming with a focus on minimizing audio delays. It features latency down to a few milliseconds whilst supporting multi-instrument jamming, and integrating with most digital audio interfaces. The software uses peer-to-peer connections, ideal for musicians who are technically inclined and want to set up a stable system. Soundjack is recommended for musicians with high speed reliable internet.

Jamulus is an open-source program that allows musicians to jam together in real-time, and it's very popular among remote collaborators. Featuring real-time minimal latency audio streaming supporting group jamming and private sessions, and works well with acoustic and electric instruments and audio interfaces. You connect to a server where you can join jam sessions, virtual rehearsals or informal jam sessions. Recommended for musicians seeking an open-source, community-supported solution.

BandLab is a cloud-based platform offering collaborative music production. This one is more focused on pre-recorded collaboration than real-time jamming. BandLab features tools for recording, editing, mixing, and sharing music, as well as live streaming features can. Musicians can create, edit, and share projects in real-time, allowing others to jump in and add their parts. It is best for asynchronous collaborating, perfect for songwriters and producers working remotely.



Open 7 Days for Lunch and Dinner
OFFER: \$12 Dinner Specials, Pizzas
 Pool Comp Wed, Trivia Thurs,
 Jackpot and Raffles Fri.

Email: info@mountwarning.com.au
 Website: www.mountwarninghotel.com.au
 Facebook: Mount Warning Hotel Uki
 Instagram: [mountwarninghotel](https://www.instagram.com/mountwarninghotel)

1977 Kyogle Road,
 UKI NSW, 2484



Bottlemart
 Hotel: (02) 6679 5111



UKI ELECTRICAL SERVICES

Domestic & commercial installation & repairs
 rewiring, meter board upgrades,
 safety switches, smoke alarms, security systems,
 telephone and data cabling
Level 2 accredited electrician
 metering, service lines, connections

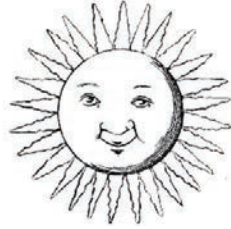
Quality workmanship guaranteed
 phone George for friendly service & honest advice

ph: 66795915 fax: 66795910 mob: 0411 185 811
 10 Church Hill Uki NSW
george.arronis@bigpond.com

ASTROLOGY

Neptune in Aries sparks a big shift

Paola Emma



The most significant cosmic event of the year just happened, on March 30: Neptune entered Aries, coinciding with the time of a Aries New Moon Solar Eclipse, potentially intensifying and deepening its effect.

With the recent ingress of Pluto into Aquarius (November 20 last year), the imminent ingress of Saturn in Aries (May 21), Jupiter in Cancer (June 10), Uranus in Gemini (July 7); and Chiron in Taurus in early 2026, Neptune's transit is part of a rare synchronous reset of all the generational planets, the collective destiny makers.

Soon Saturn will also enter Aries, meeting Neptune at the threshold of the zodiac (ecliptic, earth's orbit), the alpha and omega of the astrological wheel, another rare occurrence and one that has had astrologers scratching their heads trying to describe its possible effects.

There are many reasons why it is such a difficult transit to describe. The nature and function of the two planets involved are antithetical. Neptune is the planet of spirituality, compassion, unconditional love, dreams, imagination. Its function is to bring down boundaries, to blur the distinction between oneself and others, inner and outer life, helping us merge with everything beyond ego limitations.

On the other hand Saturn's function is to build boundaries and defences, to create a strong ego core. Saturn crystallises everything, making our experiences feel solid and permanent. Through Saturn we become aware of our personal limitations and also of the social conditioning we are forced to abide by to fulfill our material goals and ambitions.

Now Neptune, the dreamer in us, our personal and collective aspirational and idealistic side, has to walk hand in hand with Saturn, the stern upholder of hard fact and necessities, rules and duties; not an easy combination to harmonise and make fruitful.

The perfect balance though could mean a blend of idealism and realism, energised by the Fire of Aries, the 'warrior' and 'pioneer' sign.

For more on this topic and others please navigate to my astrological site: www.livingmoonastrology.wordpress.com



all pies and cakes are made on the premises
Open six days Monday to Saturday from 7 to 3
Located at the rear of the Buttery
Phone orders welcome
Great coffee
School lunches delivered to the school
ph 0407 198 707

PEACE OF MIND
TERMITE & PEST MANAGEMENT
YOUR PEACE OF MIND IS OUR BUSINESS

1 MONTH AFTER TREATMENT
UNTREATED

100% PEACE OF MIND
SATISFACTION GUARANTEED

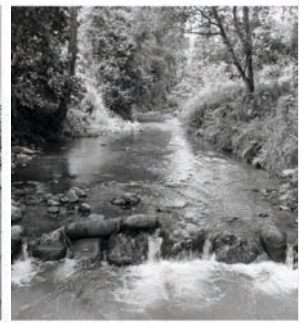
FUNNEL ANTS CAN BE CONTROLLED
12 MONTH GUARANTEE
Success rates of 2-4 years control from one treatment

ASK US HOW
07 5524 5550
www.pompestcontrol.com.au
We live in UKI



firstnational
REAL ESTATE

Murwillumbah



AUCTION

12th of April

📍 687 Commissioners Creek Road, Commissioners Creek NSW 2484

🕒 SATURDAY 1:00PM

🛏️ 6 🚿 2.5 🚗 4

Lifestyle Retreat - Perfect for Families or Investors

- Heated undercover Magnesium pool & separate heated spa with cascading water feature.
- 6-bay shed
- 6 Bed Main home & Self-contained workers- art studio.
- Dedicated camping area for weekend adventures or family getaways.

Pre Auction Viewing Times (NSW Time)

Saturday 22nd of March 11:30 AM

Wednesday 26th March - 4:00 PM

Saturday 29th March - 9:00 AM

Wednesday 2nd April - 4:00 PM

Saturday 5th April - 9:00 AM

Wednesday 9th April - 4:00 PM

Saturday 12th of April -12:30 PM



Anne Besgrove
Licensed Sales Agent
0402 608 503



John Besgrove
Licensed Sales Agent
0403 513 924

To Inspect Privately Call Agents