



# Village & Co, new crew, same successful recipe

Andia Cally

A familiar favourite in the heart of Uki is beginning a new chapter, as Village & Co café welcomes its new owners, Mariia Serdiuk and Trisha Cao.

The duo officially took over in October 2025, following the sale announced by previous owner Jess, who shared her heartfelt farewell in August: "It has been sold and will continue as a café... The time I have spent running Village & Co has been one of the best times of my life!!"

Located at 1451 Kyogle Road, Village & Co first opened its doors in December 2020 and quickly became known for its relaxed, family-friendly atmosphere, stunning views of Mount Warning, and a menu featuring all-day breakfast, fresh baked goods, and Bear Bones specialty coffee.

With indoor and outdoor seating and plenty of space for children, it has long been a community favourite for locals and visitors alike.

For Mariia and Trisha, stepping into ownership felt surprisingly natural. "We used to work alongside one another and became really good friends," they said.

"We were down in the area a lot and loved stopping into Village & Co. One day we saw it was up for sale. We just thought, why not give it a crack and try something new?"

Both bring a wealth of diverse experience to their new venture.

Trisha has worked in many different roles, from managing five-star hotels to owning her own restaurant, and most recently in child care. Maria's background includes bookkeeping and working at a newsagency, giving her extensive experience



**Mariia Serdiuk and Trisha Cao**

dealing with people. "All of that helps us connect with our customers and create the right atmosphere," they said.

It was not just the café but the town itself that captured their hearts.

"We really fell in love with the atmosphere of Uki. Taking on the café felt like a great new adventure for both of us."

Despite the change in ownership, the pair are committed to preserving the warm, welcoming energy Village & Co is known for.

"We don't want to make any changes. The locals loved the way it was, and it felt like home to people. We don't want to take that comfort away. We just want to make people happy."

That philosophy extends to the menu as well. For now, everything stays as is. "The previous menu already had a great selection. Once we're settled, we might look at expanding it, but there's no rush."

Maria and Trisha are also passionate about supporting local suppliers. "We know the locals appreciate locally sourced food. We value being able to support other local businesses."

While specialty drinks or signature dishes may come later, the pair are taking their time to ease into the role before expanding offerings or hosting community events.

What has changed, however, are the opening hours: Village & Co is currently open seven days a week, 6:30am-3:00pm, though this may be adjusted as the new owners find their rhythm.

Above all, they hope every customer feels at home. "We want people to feel comfortable, happy, welcome and appreciated. Even feedback, positive or not, is always valued."

Asked to describe the new era of Village & Co in three words, the pair sums it up as "fun, new family, great vibes."



# From the Editor

Seasons greetings from the road less travelled from your Editor at large, who is heading south.

As we wrap up 2025 and prepare to welcome 2026, we reflect on how our learnings from the past can better prepare us for the future, with RUKI calling on residents to share local flood photos to help map how water moves through our community, vital knowledge for improving preparedness and keeping everyone safe.

We congratulate RUKI who has been recognised in the Premier's Award for its brilliant work in community disaster preparedness.

In another positive step for our environment, the phase-out of small single-use plastic items, from bread tags to those troublesome soy-sauce fish, is gaining momentum, reducing the danger these items pose to native wildlife.

Our business landscape is shifting too, with two much-loved local shops welcoming new owners. Customers can

look forward to fresh ideas while still enjoying the warmth and character they've always cherished.

Meanwhile, Antique, Artisan & Atelier is preparing its new workshop space. While, Little Gallery prepares a collaborative exhibition exploring our "wild and precious life" launching alongside its festive Christmas Crafternoon – a perfect pairing to begin the Christmas season.

Wishing you and yours a healthy and happy transition into 2026.

Andia

## ADVERTISING

Business card size	\$30	Half page	\$100	All Advertisers will receive an invoice Advertising revenue helps fund the Uki News
Quarter page	\$60	Full page	\$200	

The Uki News is a bimonthly, free publication by the Uki Village and Districts Residents Association (UKIRA). Disclaimer: the opinions and views expressed in this newsletter may not reflect those of the Uki News or of UKIRA. Uki News is printed by Uki Community Technology Centre (aka CTC) at the Buttery building. It is delivered to most households on the South Arm of the Tweed River. Copies are also available at various local outlets, including the Uki Supermarket. Current and past issues are available at Uki Village website – [www.ukivillage.com.au/uki-news](http://www.ukivillage.com.au/uki-news)

### UKIRA MEETINGS

UKIRA hosts community meetings on the first Tuesday of every second month in the Meeting Room of the Uki Hall (access from the rear). Meetings start at 7 pm. All residents of Uki and surrounding districts are invited to attend. Dates for 2026 public meeting: 3 February, 7 April, 2 June, 4 August, 6 October, 1 December.

### CONTRIBUTION DEADLINES 2026

ISSUE 145 (Feb-Mar)	Friday 13 January
ISSUE 146 (Apr-May)	Friday 13 March
ISSUE 147 (June-July)	Friday 15 May
ISSUE 148 (Aug-Sept)	Friday 17 July
ISSUE 149 (Oct-Nov)	Friday 18 September
ISSUE 150 (Dec-Jan 27)	Friday 13 November

### Letters To The Editor

"Never doubt that a small group of thoughtful committed individuals can change the world. In fact, it's the only thing that ever has." Margaret Mead

We'd love to hear from you.

Share your ideas, events, hopes and inspirations for all things Uki and don't forget to fill out our survey (see next page for details).

Contact Uki News: [theukinews@hotmail.com](mailto:theukinews@hotmail.com)



**resilientuki.org**  
Community for Community

---

Your key local resource for community preparedness and connection.  
Let's work together.



Bushfire | Floods | Storms | Landslips | Heatwaves | Health & mental health | Animal care | Food security | and more.

Open 7 Days for Lunch and Dinner

**SPECIALS: Lunch and Dinner**  
Two for \$40 lunch & dinner Monday-Thurs  
\$20 dinner specials Monday-Thursday  
Trivia - Thursdays  
Pool Comp - Friday and Sundays



Email: [info@mountwarning.com.au](mailto:info@mountwarning.com.au)  
Website: [www.mountwarninghotel.com.au](http://www.mountwarninghotel.com.au)  
Facebook: Mount Warning Hotel Uki  
Instagram: [mountwarninghotel](https://www.instagram.com/mountwarninghotel)

**Bottlemart**

1497 Kyogle Road,  
UKI NSW, 2484  
Hotel: (02) 6679 5111

## Have your say: take our survey

Selina O'Connor

We invite you to take our survey and share it with friends. Let us know your ideas on how to improve Uki News.

- Simply aim your phone's camera at the QR code below to access our short questionnaire.
- Hard copies are also available at the Uki Supermarket and Nixnibbles Takeaway.
- Or visit: <https://forms.office.com/r/qu1TFaNSB5>.

All survey participants will go in the draw for a \$50 meal voucher from Nixnibbles.

Responses so far reveal the top three topics readers want to hear more about are:

- resilience
- local projects - bush regeneration
- local history

Do you agree?

Survey closes mid-January.



## Shreddy Bears Picnic

Eddie Roberts

The Uki Mountain Bike Park continues to attract mountain bike enthusiasts.

Saturday the 8th of November was no exception, with the first Shreddy Bears Picnic, hosted by the Tweed Valley Mountain Bike Riders, encouraging young local and visitor riders to come play at the park and show their skills.

Activities were designed to engage young riders in mountain biking. From riding planks to demonstrating prowess on the jumps, 65 kids aged 4–12 hung for the day with their parents and friends.

There was a great family vibe with a BBQ and lots of give a ways. Prizes handed out ranged from mountain bike equipment, food and drink vouchers, to a duel suspension mountain bike.

For those who haven't ridden the park yet, come have a ride as trails and park are in mint condition.



Some of the upcoming talent taking a few tips.





**Uki Supermarket**  
Friendly service....

Groceries, Fruit & Veg  
Gluten-free & Organic Products

Meat  
Ice  
Fuel  
Gas

Open weekdays 7.30am-6pm  
Sat & Sun 8am-5pm  
Main Street, Uki Ph: 6679 5136



**UKI SAWMILL**  
TWEED VALLEY

**BUY DIRECT**

**UKI TIMBER YARD**  
Sawn & Dressed  
Hardwood Timbers  
Building Materials  
Furniture  
Landscaping  
Fencing  
Slabs

We Deliver

Email: [uki.sawmill@westnet.com.au](mailto:uki.sawmill@westnet.com.au)  
[www.ukisawmill.com.au](http://www.ukisawmill.com.au)

Phone: 6679 5116

Smiths Creek Road, Uki  
After Hours 6679 5255



# Call out for flood photos

Resilient Uki (RUKI)

The Australian National University, the NSW SES and Resilient Uki are working together on a major project in our area to boost our ability to stay safe during floods.

The project will look at monitoring rainfall and flood levels throughout the upper reaches of the Tweed River Valley.

This information will provide a better understanding of how floodwaters flow through our landscape and allow us to make safe decisions as the waters rise.

This information will help improve forecasts and warnings of when particular bridges, causeways and roads will be impacted by flooding based on the amount of water in the soil, the amount and rate of rain, and where that rain falls.

## We need your help!

Do you have any photos of flooded causeways, bridges and roads from previous floods?

We particularly want photos that have a time-stamp from your phone or camera so that we know when those photos were taken and we can match that time with the height of the floodwaters.

Any photos from various waterways from the Mt Warning Road turnoff to the back of the shire are welcome. We specifically want images of water over roads.

Please send any photos with their location and date/time to [secretary@resilientuki.org](mailto:secretary@resilientuki.org).



Please also note if you are happy for the images to be shared with the public and whether you would like to be credited.

22 November 2024 7:45am Palmer's Road causeway



TOGETHER. WE ARE THE FUTURE OF WELLNESS.

BECOME A MEMBER TODAY! 70,000 STRONG.

EMPOWERING HEALING. BUILDING KNOWLEDGE.

**AUSTRALIAN Cannabis UNIVERSITY**

CONNECT: Find local support and shared purpose

LEARN: Access essential community education.

ADVOCATE: Strengthen our united voice.

**FIND YOUR COMMUNITY.**

[www.australiancannabisuniversity.org](http://www.australiancannabisuniversity.org)

 **UKI GINGER CO**

Premium products made from ginger grown and harvested in Uki and the Tweed Valley

**Gluten Free - Vegan**

Available at the Uki Supermarket

 **UKI ELECTRICAL SERVICES**

Domestic & commercial installation & repairs  
rewiring, meter board upgrades,  
safety switches, smoke alarms, security systems,  
telephone and data cabling

**Level 2 accredited electrician**  
metering, service lines, connections

**Quality workmanship guaranteed**  
phone George for friendly service & honest advice

ph: 66795915 fax: 66795910 mob: 0411 185 811  
10 Church Hill Uki NSW  
[george.arronis@bigpond.com](mailto:george.arronis@bigpond.com)

# News from the Member for Lismore

Janelle Saffin MP

## Single use plastic phase out continues

I'm proud to share that the NSW Government is stepping up its commitment to reducing plastic waste, with the next phase of the Plastics Plan, announced during National Recycling Week.

Plastic pollution is one of our state's biggest environmental challenges, making up nearly three-quarters of litter in our waterways, burdens landfill, with only a small fraction being recycled. Without action by 2050 we risk having more plastic in our oceans than fish.

The updated Plastics Plan targets unnecessary and hard-to-recycle items, giving businesses time to transition and encouraging investment in recycling and reusable alternatives.

Key changes include phasing out plastic bread tags and pizza savers by 2027, non-compostable fruit stickers by 2030 and requiring tethered lids on plastic bottles. Small condiment containers like soy sauce fish bottles will also be phased out and takeaway food packaging will be redesigned to be recyclable. We're also banning helium balloon releases and requiring food service businesses to accept reusable cups.

Importantly, the plan introduces a first-of-its-kind 'green' and 'red' list of chemicals used in plastics – banning those harmful to human health and the environment.

Building on previous bans of plastic bags, straws and cutlery, the plan was created in consultation with industry, councils and community groups.

We'll continue working closely with small businesses, manufacturers, retailers and councils to ensure a smooth transition to safer, recyclable alternatives and a cleaner future. To learn more visit <http://bit.ly/48k7MNT>.



Serving Northern NSW since 1998

# SUNBEAM SOLAR

Your local, qualified team  
Specialists in standalone and grid interact system designs

0428 320 262 [sunbeamsolar.com.au](http://sunbeamsolar.com.au)  
[sunbeamsolar@bigpond.com](mailto:sunbeamsolar@bigpond.com) Elec Lic 124600C

## Premier's Award for RUKI

In October, I presented Resilient Uki (RUKI) with the Premier's Award for Community Service in recognition of their brilliant work in community disaster preparedness.

After ex-Tropical Cyclone Alfred in March 2025, I met with Mel Bloor and Brendan Esposito from RUKI for a briefing on the community's preparation and response. Their coordination and care led me to nominate RUKI for the Premier's Award.

As RUKI couldn't attend the Volunteers Week ceremony in Sydney, I was pleased to present the award locally to President Mel Bloor, Treasurer Geoffrey Colwill and committee member Luke Naismith.



I then visited Rowlands Creek to meet the Uki Sporting Horse Association and see their new all-weather sand arena, funded with \$30,000 from the NSW Community Building Partnership.

Above: Janelle Saffin MP, presents Premier's Award to RUKI members, Geoffrey Colwill, Mel Bloor and Luke Naismith.



# DAN'S Removals

[www.dansremovals.com](http://www.dansremovals.com)  
0435565964

# CTC calendar

Wendy Redpath

The printing of the annual Uki calendar by the CTC was to be suspended until a new editor could be found. But due to popular demand, and generous photographic contributions, the Uki Calendar is back for another year. Due to all the community support the theme for 2026 is 'The People of Uki'.

The Uki Calendar 2026 is available at the Uki Buttery Bazaar, the Uki Supermarket and the Uki Community and Technology Centre.



# Defeating Devil's Fig

Rous County Council

Have you spotted a prickly invader on your property lately? Rous County Council is asking for your help to control Giant devil's fig (*Solanum chrysotrichum*).



This invasive weed smothers native vegetation, takes over pastures and forms dense thickets that block the movement of livestock and machinery.

Under the Biosecurity Act 2015, landholders have a legal duty to manage GDF on their property. Rous is encouraging

everyone to check for GDF, especially in disturbed areas along creek lines and forest edges. GDF has already been found in the Uki area, so now's the time to act.

If you spot it, smaller plants can be dug out or cut and treated with herbicide. For bigger patches, spraying or mechanical removal may be needed before they produce seed.

Chat with your neighbours, to prevent the spread from across adjacent properties.

To see how to control GDF, check out the two short videos at: [rous.nsw.gov.au/weed-biosecurity/weed-control](https://rous.nsw.gov.au/weed-biosecurity/weed-control) Need advice? Call the Rous Weed Biosecurity team on (02) 6623 3800 or email [council@rous.nsw.gov.au](mailto:council@rous.nsw.gov.au).



## 2026 Seniors Festival Local Achievement Awards

Nominations close Feb 6



Janelle Saffin MP  
MEMBER FOR LISMORE  
[Lismore@parliament.nsw.gov.au](mailto:Lismore@parliament.nsw.gov.au)  
ph: 02 6621 3624



Authorised by Janelle Saffin MP. Funded using Parliamentary entitlements.

# Happy Herb expands

Mel Bloor

The Happy Herb Shop in the heart of town has changed hands and expansion is the name of the game.



Not only have we doubled the size of the shop, but there are collaborative plans to make use of the adjacent courtyard as well.

The range of offerings within the enchanted nook have also expanded.

Stop by and see what's in store.

While we continue to focus on helping humans (and their animal companions) to be their most vital selves with the support of the natural world, we now have an extensive range of lifestyle accessories for the Northern Rivers.

An ever-growing range of products that assist us to be happier and healthier, calmer and more energetic fill every nook.

Committed to fostering a shop that works for the locals, we welcome product suggestions and will consider price matching your regular current online purchases.

Locals helping locals and keeping our funds in circulation among the hills seems like a good idea.

There are plenty of gift ideas for Christmas, including books, clothes, candles, crystals, journals, jewellery and more.

So, drop in and say hello and see how we can help you and your loved ones expand into vibrant health and happiness. Because that's what we all really want for Christmas.

Open 7 days a week. Mostly 10 to 4.30.



# Atelier update

Ilona Harker

Antique & Artisan Atelier at the Buttery has completed a huge spring clean and re-Feng, making way for gorgeous new-season stock and packing the shelves and racks with goodies galore for Christmas gifts and Solstice celebrations.

Ilona has been running workshops, creating a range of incredible art. She is also busy printing up new bespoke designs on recycled threads.

Nick has been developing the workshop space downstairs, the floors have been pulled up, an up-cycled industrial sink installed - complete with a non-toxic indigo finish.

The space will host a range of private and public artistic, interesting and informative workshops in 2026.

We want to thank the community for such great support and encouragement and wish a happy and fabulous festive season to all.

Connect on Facebook and Insta @ Antique and Artisan Atelier at The Uki Buttery.



Looking for Christmas gifts?  
Discover the Treasure Trove of Apparel,  
Clothing, Art, Antiques & Curiosities.  
~ Located in the heart of Uki ~

Antique  
&  
Artisan  
Atelier

@ the Uki Butter Factory

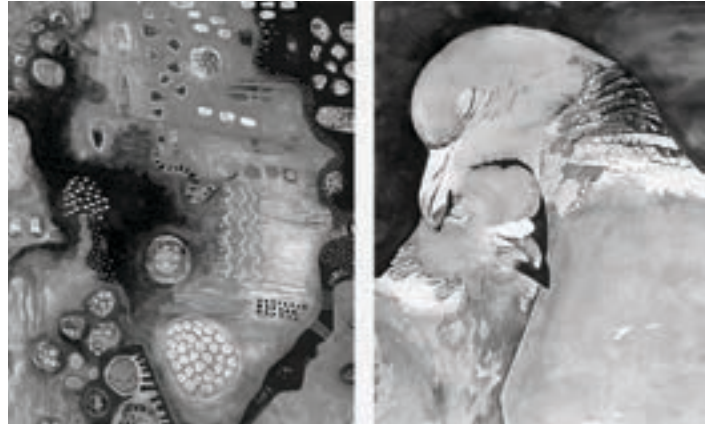
**OPEN**

Thurs 10-4pm \* Fri 10-4pm  
Sat 9-4pm \* Sun 10-4pm



# 'Wild & Precious' exhibition and a Christmas crafternoon

Little Gallery has been an active part of Uki's creative community for more than 3.5 years, with up to 12 artists participating in the collective at any given time.



Community feedback has been overwhelmingly positive, with visitors praising the diversity and high standard of the work on display.

This is based on the supportive and inspiring environment we share, one that encourages each of us to innovate, experiment, and continually grow in our practice.

Little Gallery, Uki is delighted to present our collaborative feature wall exhibition this summer: Wild and Precious.

Inspired by Mary Oliver's beloved poem – The Summer Day, the exhibition takes its cue from the question that closes the poem: "Tell me, what is it you plan to do with your one wild and precious life?"

In the poem, Oliver finds wonder in the simple act of watching a grasshopper, reminding us of the beauty and value of presence – of paying attention to the world around us.

Her words call for a quiet revolution: to reimagine what it means to live well and to create a world where everyone has the time and freedom to savour their own "wild and precious life."

Our artists will interpret this theme through a range of mediums, including ceramics, painting, photography, glass mosaic, beads, collage, and textiles.

We hope this new collaborative exhibition will once again offer work that excites, uplifts, and inspires. Wild and Precious opens on Saturday, December 6th at 6pm, with a festive evening of drinks and nibbles.

From 1–4pm on December 6, Little Gallery artists will also host a "Baubles and Bunting" Crafternoon. Children and adults alike are invited to create Christmas decorations using glass mosaics, painted ceramics, and wooden blocks. A gold coin donation per participant will go to the local charity You Have a Friend.

Wild and Precious runs from December until February.



**little gallery**

Wed-Fri, 10-3PM

Sat-Sun, 9-2pm

The Buttery

1454 Kyogle Road UKI NSW 2484

littlegalleryuki@gmail.com

0422 727 947

where little things make big things happen

**little gallery**

COME AND JOIN THE LITTLE GALLERY ARTISTS FOR AN INTERACTIVE AND EVENING OF FESTIVE FUN ON SATURDAY 6<sup>TH</sup> DECEMBER 2015

**BAUBLES & BUNTING CRAFTERNOON**

**1-4PM**

CHRISTMAS DECORATION MAKING FOR ADULTS AND CHILDREN, GLASS MOSAIC BAUBLES, CUSTOM DECORATIONS, PAINTING AND WOODEN BLOCK PRINTING ARE JUST A FEW OF THE ACTIVITIES THAT WILL BE ON OFFER. GOLD COIN DONATION TO GO TO YOU HAVE A FRIEND. SUPPORTING THE LOCAL HOMELESS.

**WILD AND PRECIOUS EXHIBITION OPENING**

**5-8PM**

KEEP THE CHRISTMAS CHEER FLOWING AND JOIN US FOR THE OPENING OF OUR DECEMBER EXHIBITION WITH DRINKS AND NIBBLES.

FOR MORE INFORMATION CALL CATHYAN ON 0422 727 947

LITTLE GALLERY THE BUTTERY 1454 KYOGLE ROAD UKI NSW 2484

Top left work by gallery artists Marlena Bassler and Heather McClelland, appearing in the Wild & Precious summer exhibition.

# Uki Buttery Bazaar Entertainment

Sanne Grace Kenna

8am - 2pm

To book a stall at the monthly Uki Buttery Bazaar please contact the Market Coordinator on 0487 329 150

Uki Buttery Bazaar Market

PLENTY OF PARKING AT RAINBOW BRIDGE AND SWEETNAM PARK

## DECEMBER Buttery Bazaar

Sunday 20 DECEMBER

### Felicity Lawless & Black Rabbit George

Two of the Gold Coast's iconic artists, Felicity Lawless and Black Rabbit George (Paul George), unite through their love of gypsy and flamenco rhythm.

Drawing on their travels and shared passions, they blend virtuosic guitar, song and storytelling into music greater than the sum of its parts.

A long-awaited collaboration between two masterful troubadours – a seamless fusion of folk, gypsy, flamenco, classical and world music.

### Black Rabbit George

With echoes of the Middle East, flashes of flamenco and the warmth of folk, Black Rabbit George delivers a dazzling fusion of styles that both astonish and uplift.

A founding member of Tijuana Cartel, he has honed his unique sound across Europe, Asia and America, now captivating Australian audiences with his virtuosity.



ABOVE: BLACK RABBIT GEORGE & FELICITY LAWLESS COMBINE THEIR TALENTS & PLAY SOLO

### Felicity Lawless

Felicity knows how to capture an audience.

From Spain's tapas bars to Japan's live venues and Australian festivals, she's built a loyal following always eager for her return.

Felicity defies labels, blending gypsy, world, rock and folk into her own sound.

## JANUARY Buttery Bazaar

Sunday 17 JANUARY

### Empress Katia

Multi-dimensional songstress Empress Katia is an enchantress of creativity and expression. Her music weaves magic through words and melody to empower, inspire, and deepen connection to self and the joy of life.

With soulful, honey-toned vocals and a fusion of soul, funk, reggae, roots, jazz, hip-hop, RnB, and world sounds, her songs linger like sweet affirmations that uplift and move the spirit.



EMPRESS KATIA



SKYEATER

### SkyEater

A dreamy collaboration of water spirit Chelsea Skyeater and dub soldier TK, blending soaring vocals and rootsy soundscapes into a lush fusion of dub, DnB, trip-hop, and soulful pop.

With multiple EPs, singles, and a vinyl LP, they've toured extensively across Australia, New Zealand, and the UK, performing at Boomtown Fair, Luminare, Island Vibe, Queenscliff and more, alongside artists like John Butler, Eva Lazarus, and The Scientist.

Their sound drifts through reverb-soaked piano, ethereal vocals, reggae-infused grooves, and sparkly jungle DnB, creating a magnetic world where mermaids dance to the rhythm of the sea.

# How AI in search engines improves results

Louise Bally  
.....



Search engines have now implemented AI to assist with the accuracy of your searches.

Instead of targeting specific keywords, the AI interprets intent, which doesn't force you to phrase things perfectly.

It detects intent using your search history, as well as what you are typing. It can easily detect if you are trying to compare product price and quality, troubleshooting a problem or investigating sizing issues.

For example, it can detect preferences for ethical branding or alternative health using specific wording to filter out unhelpful search results.

Websites that have inaccurate meta data and keywords, but contain information relevant to your search will appear in the search results.

This is because AI instantly scans the site's content, not just the titles and keywords. The page summaries are often AI generated from the content, which saves you from opening irrelevant sites.

Shoppers will see results that reflect their personal preferences needing less manual filtering as the AI learns from your search history whether you prefer natural fabrics, have sensitive skin or like local brands. Hopefully it will take less time to find what you are looking for.

New or niche products become discoverable faster, a thing that old-style search engines were slow to recognise.

Product review information can be easily made available as AI will summarise reviews across many sources.

We hope to see less spammy sites and online scammers as AI learns to filter this out. Over time, the Internet should become cleaner, more trustworthy and transparent.

If you own a website, consider updating your meta data and product or service descriptions for higher search engine ranking.



**Mt Warning**  
community preschool  
so much more than just a preschool.

**Play based learning  
in a nature rich  
environment.**

Preschool for 3 to 5  
year olds

Playgroup for 0 to 6  
year olds

**Enrol  
now  
for 2026**

Mt Warning Community Preschool  
120 Glenock Rd, Dum Dum  
mtwarningpreschool.com  
director@mtwarningpreschool.com  
admin@mtwarningpreschool.com

# Improvements to Sweetnam Park

Philip Carr, UKIRA

Tweed Shire Council has made great progress in upgrading Uki's Sweetnam Park.



Above: a preview of some of the newly installed play equipment at Sweetnam Park.

Just a few finishing touches before opening mid-December, in plenty of time for school holidays.

With the aim of revitalising and modernising the park, and to create a recreational space that's more inclusive of everyone, the project features:

- new play equipment for younger children;
- nature-play elements, including a cubby and climbing net;

- basketball key for youth;
- small-scale skate element;
- seating, drinking fountain and rubbish bin
- picnic table and shelter;
- connecting pathways, including a periphery pathway around the green space; and
- landscaping and tree planting.

The Australian and NSW Governments provided funding for the project in response to the substantial damage from the 2022 record flood.

With a project budget of \$380,000 the park upgrade will improve resilience to future weather events.

Thanks to the Council team for realising this project, securing extra resources for a pathway looping around the park (Uki walkers will be very happy) and for its community consultation during the planning phase.

Come on down to Sweetnam Park – there is something for everyone.



UKI'S  
**HAPPY HERB SHOP**  
... where all is calm and all is bright.  
Bring yourself and your loved ones the gift of peace, joy and vitality this Christmas.  
SUPPORT LOCAL

# Volunteer with Uki Rivercare

Matthew Bloor



As we head towards another wet season, it's good to think about how our local creeks and rivers will fare over the next few months.

It's been nearly four years since the extreme flooding hit our region, and we are still in recovery phase.

The Tweed River is quite resilient to floods, but the erosion of the 2022 floods was extreme.

Recovery is slow, and time is needed to protect and restore our riverbanks to a condition where they can handle another large flood.

As floods become more frequent, longer lasting and more severe, communities across Australia are searching for smarter, more environmentally friendly ways to manage risk and build resilience.

Nature-based solutions use natural processes to slow down and store floodwater in the catchment.

Revegetating riverbanks and floodplains can reduce flood risk, improve water quality and habitat, enhance community spaces. These methods are often more cost-effective than traditional 'hard' flood defence infrastructure. How do we scale up works in the face of climate

change when the investment simply isn't there? One answer is connecting with community organisations and creating opportunities for partnerships.

Volunteering with a nature care group is a small step on a much larger journey to community and environmental resilience.

Uki RiverCare is part of Tweed Shire Council's Nature Care Group program. In partnership with Tweed Landcare, volunteers are working as part of a coordinated effort to protect and improve the natural environment throughout the shire.

No matter your skill level or experience, joining Uki RiverCare is a fantastic way to meet new people, connect with nature, develop new skills and contribute to a healthier Tweed River.

Workdays are held every 4th Sunday of the month, and usually involve weeding, planting native trees, maintaining walking paths and sharing morning tea. Meet at the carpark on Kyogle Road, opposite Meadow Place, we work from 8am to around 10am.

For more information, please visit Volunteering | Tweed Shire Council or contact Matt Bloor, Uki RiverCare Coordinator at [mbloor@tweed.nsw.gov.au](mailto:mbloor@tweed.nsw.gov.au) or call 0490 330 632.



the Tweed River after the 2022 floods.

# Rainbow Bridge renewed in Marley's memory

Philip Carr  
.....

The colourful mural on Uki's Smiths Creek Bridge has been freshened up thanks to a dedicated bunch of volunteers celebrating what would have been the 21st birthday of Marley Cross, an 8-year-old boy from Chowan Creek, who passed away suddenly on 31 May 2013.

As a memorial to Marley, in 2014 the bridge railing was spontaneously painted in rainbow colours by loving family and friends.

Despite the heartfelt intentions, Tweed Shire Council was obliged to paint over the colours as graffiti.

Fortunately, Council decided to defer any this

work pending results from a community survey conducted by the Uki Residents Association.

The survey drew a huge response, with a substantial majority of residents in favour of retaining the artwork as a permanent memorial to all children lost locally.

Ultimately, Council agreed to support a new mountain scape design and to formally adopt the mural as a Tweed Public Art Installation.

Thanks to all who scrubbed and painted the rainbow bridge last month - the mural looks terrific.



Volunteers repaint Rainbow Bridge for Marley's 21st birthday.



**UKI AUTOMOTIVE**  
ACN 638 213 171

**Brendon Veares  
Matt Clark**  
DIRECTORS

Ph: (02) 6679 5225 A/Hrs: 0468 937 090  
1504 Kyogle Rd, Uki, NSW 2484

**SCOTTY LIGHT**

**Electrical & Solar Contractor**  
OFF-GRID Solar Accredited  
STC Rebates on Panels for OFF-GRID!  
Grid Connect Solar (STC Rebates) & Batteries  
New Builds & Renovations  
Garden Lighting

Scott 0403302680 office@scottylight.com  
NSW License 383419C

**PEACE OF MIND**  
TERMITE & PEST MANAGEMENT  
YOUR PEACE OF MIND IS OUR BUSINESS

- Pest Control
- Termites
- Inspection
- Termite Baiting Systems
- Funnel Ants

**100% PEACE OF MIND**  
SATISFACTION GUARANTEED

FUNNEL ANTS CAN BE CONTROLLED  
12 MONTH GUARANTEE  
Success rates of 2-4 years control from one treatment

**ASK US HOW**  
**07 5524 5550**  
www.pompestcontrol.com.au  
We live in UKI

# The start of a beautiful friendship

Bryan McClelland

Eleven local volunteers drove 23 refugees from Varsity Lakes on October 18 to the eight host homes for lunch.



Traditional dancing from PNG, Afghanistan, Iraq and Iran was enjoyed by all.

Friendships seeded in cars, were nurtured that afternoon through conversation, pool or surf swims or simple relaxation in our countryside. Visitors from New Guinea highlands escaping domestic or tribal violence were delighted by our landscape.

The potluck meal with delicious food provided by our local supporters and Bush Dance was again Saturday's highlight. Fabulous Playing Possum music guided by Jo Spiller had most of the 65 people up and dancing, enthusiastic children included. Locals viewed and shared in traditional dancing from PNG, Afghanistan, Iraq and Iran. More interaction between residents and guests.

A leisurely Sunday morning before similar numbers, including Cudgen Surf Life Savers, gathered on Cudgen Creek to enjoy water and beachside activity culminating in a picnic feast with BBQ, salads, plus all sorts of nibbles and sweets.

The Life Savers concluded with a talk setting out how to stay safe in Aussie beaches and rivers.

After lunch the visitors were driven back to the railway station.

What a tremendous annual opportunity for our community. You may contribute by hosting, driving, preparing food to be shared or simply participating in the joint events.

It's the personal stories that make the most impact. Another beautiful family of four spoke about finding their feet after 10 years in refugee camps in Indonesia.

Uki Hall, Wollumbin Bakery and IGA donations were greatly appreciated.

URP does much more than run weekends with refugees, including letter writing to urge more humane responses from our government, financing Hazara women to educate Afghan girls in secret in the most deprived and remote areas of Afghanistan. Supporting schools run by refugees for families in limbo in Indonesia. Assisting individuals who helped allied soldiers in Afghanistan find sanctuary.



## Byrrill Creek road closure

Tweed Shire Council has announced that flood restoration works are underway on the major slip on Byrrill Creek Road, located a few kilometres from Kyogle Road.

The work requires Byrrill Creed Road to be closed from 9am to 3pm daily, with a window for local residents' access from 1pm to 1:30pm daily.

Work is expected to continue through to May 2026, weather permitting.

Note, the road will be open over the Christmas/ New Year holiday period from Sat 20 December to Sun 4 January.



# ASTROLOGY

## Aquarian revolution

Paola Emma

The key planets to observe, in December and January, will still be Saturn and Neptune, as they get closer to their final shift into Aries and their exact alignment on February 21 2026.



Mars also plays a key role during this period, becoming a catalyst for the functions of the slower planets, not only Saturn and Neptune, but also Uranus and Pluto. Mars can help to kick-start the deeper, life changing themes represented by the slower planets, accelerating positive results and/or intensifying the challenges.

Furthermore the relative speed of Saturn, from November 28, and Neptune, by December 10, will increase, a sign that a planet is becoming more active, pushing for progress and the resolution of issues that have surfaced but remained unresolved during the retro period. Whichever effect you have already experienced from the alignment of the planet of structure/discipline to the planet of imagination/escapism, a resolution could be on the cards by early next year.

Between December 9 and 14 Mars in Sagittarius will activate Saturn and Neptune in a challenging way (square). Impediments obstructing your need to create a deeper sense of security (Saturn) but also a lifestyle closer to your ideals (Neptune) will have to be confronted head on. Failing to do so could cause more inner turmoil and open confrontations.

On December 21 the opposition of Mars in Capricorn to Jupiter in Cancer could escalate any situation too.

The last week in January will be, astrologically speaking, quite remarkable. At the late Capricorn New Moon, on January 19, Sun and Moon will form a favourable configuration involving Uranus, planet of revolutionary changes, as well as Saturn and Neptune.

The very next day Saturn will connect favourably with Uranus too, the old embracing the new. To add to this Venus, the Sun, Mercury and Mars will all enter democratic Aquarius and soon after become conjunct Pluto, the planet that more than any other can help us eradicate the noxious weeds from our lives and start on completely new footing. Let's hope it is not going to be too much of a bumpy ride. ✨



**all pies and cakes are made on the premises**  
Open six days Monday to Saturday from 7 to 3  
Located at the rear of the Buttery  
Phone orders welcome  
Great coffee  
School lunches delivered to the school  
ph 0407 198 707



**GARY ARNOLD WATER SUPPLIES**

- **7 Trucks available** (various sizes)
- **Domestic water**
- **Pools filled**
- **Road works**
- **7 days**

**PROMPT SERVICE!**

**Mob: 0402 713 474**  
**H: (02) 6679 5512**



**1382 Numinbah Road CHILLINGHAM -Elevated Residence, Rainforest Gardens & Infrastructure**

This modern steel frame home offers 4 bedrooms, 2 bathrooms and 4 car accommodation with stylish open plan living, hardwood floors, a cosy wood fire and air conditioning. A detached loft studio provides the ideal space for work from home, creative projects or guest stays. The property includes quality shedding with a double garage, workshop and additional shelters. Outside, enjoy rainforest style gardens with charming bridges, a pond and productive fruit and herb beds. With solar, bore water, tanks and RU5 zoning, this lifestyle package sits just minutes from Murwillumbah and Chillingham.



**517 Upper Burringbar Road UPPER BURRENBAR -Lifestyle, Income & Coastal Views**

Offering a mix of fertile flood free flats and elevated ridgelines with coastal views, this property delivers exceptional productivity and versatility. Water security is a standout with permanent springs, a creek and an irrigated dam. Rich volcanic soils support grazing and an established orchard lease, while multiple rental incomes add strong returns. A renovated cottage, machinery shed, stockyards and 3 phase irrigation.



**Team Besgrove**  
Matching People with  
Properties

Anne Besgrove – 0402 608 503  
anne.besgrove@fnmurwillumbah.com.au

John Besgrove – 0403 513 924  
john.besgrove@fnmurwillumbah.com.au