



An initiative of UKIRA

Xmas

December 2001

# Uki News

Where the mountains touch the sky!

## From the President's Desk...

UKIRA now has a really good representative mix of residents. We have members who belong to the Uki Hall Trust, Historical society, Gardening club, touch football, P&C, businesses and Landcare groups who attend every meeting. We would love to increase this to include more growers, tourist operators and businesses. There are great opportunities ahead for businesses with the opening of the CTC in Uki, and it would be great to further draw from the skills within the community.

As for myself, I have submitted my resignation this month. Due to my work commitments I am not around as much as I used to be and I am struggling to stay in touch with the needs of a busy association. I believe that UKIRA deserves to have a committed executive. I was holding 2 positions, and it really needs 2 people to share the job.

Let me tell you it is highly rewarding and the members of the Uki residents Association known as UKIRA are a really supportive and highly motivated group. Our meetings are fairly informal and we all get on really well. There are always new people

joining which makes it interesting and it is definitely not a *clique*. Come along to meet us all and understand our motivation, or just to add your two bobs worth. The better the mix the more we can achieve for the community.

The last few months have been quite busy for UKIRA. There has been great news with the CTC application for funding being successful. This is the beginning of a lot of work but it will be worth it. We will keep you informed as we are in the very early stages yet, but hopefully by early next year we will have something that everyone can be apart of.

The Work For The Dole (WFD) team are out and about. A great group of guys who I think are actually enjoying their time here. They have completed the path, as you know, cut down heaps of Privet in Sweetnam park, cleaned heaps of rubbish up from the riverbank back of the buttery. Take the time to have a look around, they are such an asset.

We must really thank Tweed Training & Enterprise Company (TTEC) who made this possible. They co-ordinated

and organised the team on our behalf. We hope to continue the program with TTEC and the WFD team up until Feb 2002.

Thanks also to Julia Hancock who organised a great community BBQ for the WFD team just after the path was finished. Thanks also to everyone who came and helped out.

Uki residents have been very supportive of our endeavours and I would like to thank you all for trusting us to act on your behalf. Our meetings are open to all. It only costs \$5 for you to join, and we meet the 1st Wed of the month at 7pm in the hall.

Cathy Donaldson



The Uki Residents Association  
wishes everyone  
a Merry Christmas  
& a Prosperous New Year!

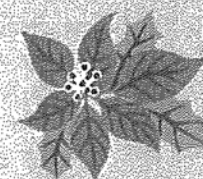
### Inside this issue:

From the editor	2
The Hall trust	2
Garden club gossip	3
Centenary garden working bee	3
Historical society news	4
Caring collaboration	4
A pathway for posterity	4
Focus on...Joy Armour	5
Put your money in the (Art) Bank	5
Uki Sewage Treatment Plan	6
Sweetnam Park Update	6
School's new playground a big winner	7
Who cares...Uki cares	7

### Road works

The sealing of Rowland's Creek Road is now complete.

In the New Year Council will be commencing work repairing sections along Smiths Creek Road between Ryan's Road and Adcock's Road.



## From the Editor...

Hello and welcome to the final newsletter for 2001. This edition is full of fabulous contributions from many generous Uki and district residents who, by their actions improve life around here for us all - thank you contributors.



Next year as we introduce new features into the newsletter you'll be hearing from even more local groups and associations. UKIRA is facilitating a process to create a community directory of clubs, hobby groups, associations and any other kind of common interest group who wants to be included. So come on all you hobby clubs and associations, please make contact with us so that the people out there want who to hear about you, can! So untill next year, have a merry Christmas and may all the dreams of your heart come true.

Edwin Macpherson

## Healing with Light

Psychic Readings & Counselling  
Intuition Awareness Workshops  
Therapeutic Massage  
Deep Tissue, Ayurvedic,  
Relaxation, Reiki

Ev Macpherson 6679 4232

Uki Dreaming  
Natural Therapies Centre  
6679 4235



**JUDITH MAGEE**  
(Dip. Herb., Med. D.H. Couns., D.P.A., NATURAL MATHS)

Classical Homoeopathy  
Counselling  
Flower Essence Therapy  
Nutritional Advice

Phone (02) 6679 5855

### ARE YOU A LOCAL BUSINESS?

Do you have a GREAT PRODUCT or SPECIAL OFFER our local residents shouldn't miss out on?

*Then you should ADVERTISE in our next newsletter!*

To discuss your personalised advertisement contact Tessa now on 6679 7060 or oakdale@better.net.au

## The Hall Trust

Hello to our community. We have good news and great plans for the future of our Uki School of Arts and Community Hall. A program to beautify the grounds is underway. We are looking to make some improvements inside the hall. The stage requires some black side curtains, a backdrop and a locally designed and made stage curtain.

In the future we hope to revamp the kitchen and other amenities to make the hall available to a wider group of users. Some of the ideas for using the hall include indoor games such as badminton and table tennis and a monthly "Creative Café" to showcase local performing talent. We are open to ideas

and would love to hear from the community.

Thanks to Cath Donaldson and Jane Arnold for their work in successfully procuring a grant of \$1,347 to purchase requirements for the hall. Thanks also to Larry Anthony for supporting our application and coming through with the goods.

### Booking Schedule

Our new Booking Schedule is as follows:

Day Hire:  
Main Hall: \$5 per hour  
Supper Room: \$4 per hour

Kitchen: \$5 per hour  
Catering Equipment for functions: \$20  
Trestle tables per day: \$5  
Cutlery: \$20  
Chairs (please enquire)

Information on Night Hire can be obtained from Janaki on 6679 7163. Bookings can be made at the Uki Post Office or through Janaki and keys can be picked up and dropped off at the Post Office.

The Hall also has an advertising board, which can be accessed for 50c per week. See Phil at the Post Office or call Janaki for details.

## Garden Club Gossip

### \$5,000 grant

Uki Garden Club has applied for a \$5,000 grant (International Year of Volunteers Small Equipment Grant) to purchase gardening tools for various community groups to use when maintaining local community gardens. (green) Fingers crossed that we will be successful!

### Flowers

The usual spring frenzy of horticultural activities has been hampered by the drought this year, but that hasn't stopped members' gardens being a riot of colour. The flower-arranging subgroup has been busy creating seasonal bouquets, some of which were used to decorate the Hall for the Friends of Uki Spring Dinner.

### Trips

The Club's trip to Toowoomba on 23 & 24 September was a huge success and we were all well pleased with the colours, scents and splendour that the City puts on each year. The Festival organisers certainly know how to look after the thousands of visitors that flock there annually, and we were very impressed with their professional and friendly attitude. On 27 October it was off to Grafton for the Jacaranda

Festival in an inter-club outing with Nimbin Garden Club. Gorgeous!

### 2002 Preview

The last meeting for this year will be held on 24 November but next year's programme is full of exciting events such as a trip to Maleny to see the daylilies, a cuttings workshop in autumn, a banner and flag making workshop during the school holidays, guest speakers, hands-on horticultural demonstrations and lots of yummy afternoon teas and wonderful gardens to enjoy.

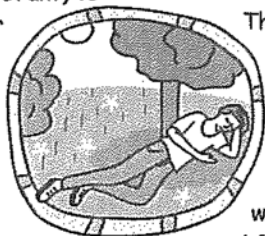
### Rob's garden machinery tips

Summer is nearly here and will that mower or brush cutter start? Here are some useful money-saving checks before that rush to the mower shop.

1. Check fuel in fuel container for stale fuel and water condensation by pouring some into a clear glass. It should be clear and not milky. It is best to drain out leftover fuel and leave open container in a sunny spot for a few hours to dry out then fill with fresh fuel at the start of the season.
2. Check blades for wear and sharpness.
3. Check ride-on cutter and drive belts.

4. Check ride-on battery acid level - charge battery.
5. Check engine oil level if it is a 4-stroke.
6. Check air filter.
7. Check for any loose bolts and fittings.
8. Replace spark plug.
9. Check for mud wasp nests in muffler of brush cutters, chain saws and chippers.
10. Brush cutters and chainsaws are best drained of fuel after use to prevent fuel going stale in the fuel tank.

*If you are interested in joining Uki Garden Club in the New Year, please call Lyn Reid (President) on 6679 5238.*



### ROB'S MACHINERY REPAIRS

#### Reasonable rates!

All makes and models of:

- Mowers
- Chainsaws
- Brush cutters
- Ride-ons
- Petrol and electric chippers
- Domestic water pumps



**Call Now!**  
**6679 5238**

## Centenary Garden Working Bee

Next time you are strolling through Uki, take a moment to enjoy the Centenary Gardens at the front of Uki School. Designed by Robyn Cox and established in 1995 to mark the centenary of Uki School, these gardens are a delightful feature of Main Street. Here, native banksias, brachy-chitons, lilypilies and lomandras jostle with exotic dianthus, hippeastrums and pelargoniums in a merry melange. Thanks to the ongoing efforts of gar-

den guardians Betty Brims and Dot Lange from Uki Historical Society and a helping hand from Lyn Reid and Julia Hancock of Uki Garden Club, the gardens are now looking as pretty as a picture.

Ph/Fax 02 66 725 229 Mobile 0417 260 061  
Kyogle Rd • Bray Park via Murwillumbah 2484 NSW

Props Glenn & Elaine Potter

## Potter's Mower Centre

### Service & Repairs

Ride-ons • Mowers & All Small Engines

## Historical Society News

Thankyou to all the people who donated money for paving and landscaping around the Historical Society's room at the back of the old tennis court. Each of them gave \$14 to buy a metre of materials and the Sports Club came up trumps with \$140.

Our plan is to improve the safety of the area and to make it more attractive in keeping with the other lovely gardens in our village. The project is due to go ahead as soon as possible, with the labour supplied by our fabu-

lous Work For The Dole team. With the co-operation of the Hall Trust, we hope to make our room more open to the village and our visitors.

All the donors' names will be recorded on a plaque for display in the garden (and there is still time to add more names to the list). It is wonderful to see our district continuing the tradition of helping.

The landscaping is only one of our projects. Photographic storage is to be

improved, displays planned and recording updated.

With the year 2001 coming to a close we'd like you to think about the sorts of things you saw change this year. Did you get married? Build a house? Have a baby? Were you at an event celebrating the Centenary of Federation? Do you have photographs or documents the Society can copy for the Archives?

*You can contact our secretary, Mary Roberts on 6679 4157.*

## Caring Collaboration

The weekend of 20 and 21 October brought together two vastly different volunteer groups to cooperate in a single mission: to bring pleasure and make a profit!

Helen and Bob Trajkosky generously opened their wonderful garden, The Lily Ponds, at Burringbar through Australia's Open Garden Scheme, and raised for Tweed Palliative Support Inc. Not only was the garden simply

superb, but the lunches and teas organised by the volunteers at Palliative Support were sinfully delicious. The Far North Coast abounds with good gardeners and good cooks and plenty of visitors from all over Australia came and enjoyed their efforts!

Look out for similar floriferous fundraisers in this area next year. Meanwhile, on 10 & 11 November, Yvonne and Fred Vaughan's beautiful daylily farm

at New Italy, off Pacific Highway, Woodburn was open to support the Westpac Helicopter, the Coast Guard and the SES.

*If you have an excellent garden you would like to share for one weekend in the year and know of a charity that would be interested in arranging a similar collaboration, please call Julia Hancock, Australia's Open Garden Scheme Regional Selector on 66 79 5414.*

## A Pathway For Posterity

Steve Forman and the Work for the Dole Team have done a marvellous job laying the concrete footpath along the front of the Buttery to the butcher shop in Uki.

No more slipping in the mud! No more tripping on uneven surfaces! The team did a terrific job and as a small token of the community's appreciation, the

Residents' Association arranged a barbeque lunch, which was enjoyed by all who were instrumental in bringing this project to fruition. Well done lads and heartfelt thanks for our lovely new path.





## Focus On... Joy Armour

It is a very interesting experience to seek individual views on a subject or person in order to complement the cold hard facts of standard research. To gain this type of feedback about a popular local lady - Joy Armour, many Uki residents, including a number of business people, were approached and asked to comment.

The result revealed a great deal of positive thinking about her and reflected a genuine feeling of community warmth.

Joy's parents had a farm in the Uki district and although she was born "in town" at Murwillumbah, Joy has lived most of her life in Uki. After she married Danny Armour, who worked for NORCO, they spent a short time in Bangalow. Joy was christened, educated and married at the local Catholic Convent School and Church - and she wants that location to be her final resting place.

Organising and organisations feature

prominently in Joy's life. She is a capable co-ordinator and, whenever there is a community event she is always willing and able to become active in a group and provide assistance. Naturally Joy leans toward those organisations geared toward helping people.

After the old Convent School closed, her children attended the Uki Public School where Joy immediately became an active member of the P&C.

As most are aware her current affiliations are with the Australian Red Cross. Until recently she was involved with maintenance and management of the Uki Hall for many years as well as numerous other charities and community groups over the years.

Joy has a great love of humanity and loves to get involved with people. Those who are lucky enough to know her well receive a phone call or card every Christmas and birthday and sometimes



for no reason at all - just to say hello or congrats for some achievement. It has been said of her that she has a passionate hobby - some folks collect stamps or postcards - Joy collects people.

This first year of the new century will be one of importance for Joy. It will be memorable as the year she graduated as an Octogenarian - a most significant achievement - and also, the year in which she was chosen to be part of a Centenary of Federation Event as one of a select group to be represented in the PEOPLESCAPE at Parliament House in Canberra.

And so Joy, on behalf of all the residents of Uki and districts, and the whole Tweed Valley, and all Australians, and the countless numbers of people whose lives have been touched by your kindness and generosity of spirit - we give you a huge thankyou! Without you Uki would not be what it is today.

## Put Your Money In The (Art) Bank

The opening of the Uki Art Bank in September put Uki artists well and truly on the map in this part of the Tweed Valley. Since then, resident artists Lisa Gair, Col Jenkins, Joey Lonza and Lisa Wise have gathered together many more creative and inspirational works by some of the region's most prominent artists - Arna Baartz, Gordon Bain, Bruce Clarke, Peter Hobbes, David Isbester, Hobie Porter, Gabriela Soelkner, Robert Todonai, Ruth Venner and Guy L. Warren.

The Main Gallery showcases the work for sale, while the remaining rooms in this fascinating and historical building have been converted into studios

where visitors can see the artists at work.

With Christmas just around the corner why not go in and select a special piece for someone you love. The range is enormous, from large oil canvases to birdbaths for the garden, each unique and handmade.

Want something creative to do during the long summer holidays? The group also runs a range of classes and workshops for beginners and experienced artists alike in handmade ceramics, raku firing, decoration and design, kids art, painting, life drawing and more. Have fun & make something beautiful!

*Gallery hours are Friday, Saturday, Sunday and Monday 9.00am to 5.00pm. Other viewings by appointment. For more information contact the artists at the Uki Art Bank on 6679 5799 (phone/fax) or email [Sistapotz@bigpond.com](mailto:Sistapotz@bigpond.com).*



## Uki Sewage Treatment Plan

Work is set to begin on the Uki sewage treatment plant following funding approval from the Department of Land and Water Conservation. Tenders have been called and work is expected to commence early in the New Year.

The treatment plant will be built on land north of Clareville Road and will service properties within the Uki village as well as those along Smiths Creek Road (between Uki and Clareville Road). This is great news for residents of Smiths Creek Road because the Department's original funding offer did not allow for these properties.

However, Council has advised that, before any work can begin, easements need to be created where pipes cross over private property. This requires affected residents to sign consent forms. Council has indicated that some consent forms are still outstanding.

The total cost of the project will be \$3.5 million. The Department of Land

and Water Conservation will provide \$2.5 million and the balance will be met by the Tweed Shire sewerage fund as well as a levy on Uki village ratepayers.

### Koalas give Uki Sewage the green light!

Koalas at the Currumbin Wildlife Sanctuary are rubbing their tummies in anticipation after hearing news that plans are under way to grow eucalypts at the Uki sewage treatment plant.

Under the plan, which represents a joint effort between Currumbin Wildlife Sanctuary and Tweed Shire Council, treated effluent from the Uki sewage treatment plant will be used to irrigate a plantation of eucalyptus trees. Their leaves will be harvested by Currumbin Sanctuary staff and fed to koalas resident at the Sanctuary.

To ensure that irrigation needs are

met during the dry months, treated effluent will be stored in a small onsite dam during the wet periods. Tweed Shire Council has nearly finished work on this dam already.



The scheme will virtually eliminate the need to discharge treated effluent directly into Smiths Creek.

Trees will be planted in early 2003 when the sewage treatment plant becomes operational. Daily harvesting of leaves will be carried out in accordance with standard horticultural practices and will require the use of a special gum-cutting vehicle. Leaves will need to reach the Sanctuary within a couple of hours in order to maintain freshness.

Sewage treatment plants at Elanora and Merrimac have been operating successfully along similar lines since the mid 1990s.

## Sweetnam Park Update

### Lucky dip

Sally Pearmain from NSW Agriculture has confirmed that the tests conducted on soil samples in Sweetnam Park have revealed that no contamination has occurred from the adjacent dip site. Plans for the Native Park Demonstration Garden can now be taken to the next stage.

In the meantime Steve Forman, Ian Anderson and the Work for the Dole Team have done a terrific job clearing campbors, privets and other invasive weeds from the river banks immediately behind Sweetnam Park. Their labours have revealed some lovely picnic spots and an opportunity to meander along the river bank and hopefully spot a platypus or two. Many thanks to all

those involved in this project.

### Bush essences

Part of the Sweetnam Park development includes a section set aside for the cultivation and display of bush essence plants. Sandy Gregory from Uki Dreaming and Julia Hancock from Uki Garden Club have been liaising with Bryant's Native Plant Nursery in Lismore to draw up a planting plan. They are proposing to create a small garden in front of Uki Dreaming with some of the more ornamental bush essence species, to facilitate the bush essence workshops they hold at the shop. The garden is in-

tended to be of aesthetic as well as educational value.

For more information on either of these two projects contact Julia Hancock on 6679 5414 or [hancock\\_julia@hotmail.com](mailto:hancock_julia@hotmail.com).



**Uki Dreaming...**  
Healings & seminars...  
For Earth and Spirit...

**Cafe** 66795751  
9 till 5 every day Eddy  
open late fri & sat Karen

**GUESTS! Kelly**  
600 a night  
66795777

**Gifts & Remedies Shop** 66794235 Sandy  
Books; Jewellery; crystals;  
boxes; flower remedies;  
Woteds; Aura somas; candles.

## School's New Playground Is A Big Winner!

Uki Public School celebrated its new playground with an official opening on 23 November.

The old playground equipment was removed last year for safety reasons and children at the school have been anxiously awaiting the new playground, which features modular equipment, a unique double slide and state of the art softfall.

Funds were raised both through the efforts of the Uki School Parents and

Citizens Association and through donations from the local community.

The School and the P&C acknowledges all of those helpers who assisted with planning, fund raising and assembling the equipment, and extends its appreciation to the wider Uki community, which has generously supported this project over the last twelve months.

Thanks also to Uki local, Michael Brooks, for providing his bobcat services free of charge.

**UKI  
WOODWORKS**  
UKI NSW 2484  
AUSTRALIA

- Fine Joinery
- Timber Kitchens
- Custom-made Furniture

**Ph/Fax  
0266795350**  
PROPRIETOR - GEOFF DE MAERE

## Who Cares?...Uki Cares!

The Uki After School Care Centre is proving to be a highly valued and much needed service in the local district, having doubled its attendance figures this year

The not-for-profit centre, which is sponsored by the Uki Public School Parents and Citizens Association, provides care for all primary age children between 3pm and 6pm Monday to Friday.

More and more families are finding that the centre offers them greater flexibility when considering employment, education or training opportunities.

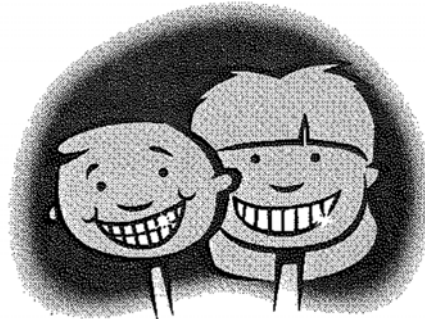
Also, many parents are using the centre on a more casual basis just to give themselves a break or to do the shopping in peace, knowing that their children are being cared for in a safe and supportive environment.

Most families are eligible for the government child care benefit, making fees at the centre highly affordable.

Centre coordinator Jayne Parrot said that children love to attend the centre because there are so many varied activities for them to do.

"The brand new playground at the Uki School is also proving to be very popular. We are delighted with the growth in the centre and expect the attendance to increase by a further 40% over the next 12 months."

Phone Uki Public School on 66795128 for more information and bookings.



*Congratulations to  
Madeleine Magee-Carr  
for winning the \$100 shopping  
voucher prize in the recent Uki  
After School Care promotion.  
Support from the following local  
businesses is greatly  
appreciated.*

*Uki Shopping Centre*

*Curl Up & Dye in Uki*

*Uki Dreaming Shop*

*Uki Dreaming Café*

*Uki Post Office*

**An Initiative of  
UKIRA**

PO Box 141 Uki 2484

Phone: 02 6679 5041

Fax: 02 6679 5101

email Edwin Macpherson:  
starlight@better.net.au

email Tessa Martin:  
oakdale@better.net.au

**Where the mountains  
touch the sky!**



**CLAY PLAY Adult Handbuilding Classes:**

Wed 5.30-7.30pm, Fri 9.00am-1pm, Sat 11am-1pm

Also Raku workshops, Kidz classes, Life drawing & more!  
**Call now to book a class, 6679 5799**

**LYREBIRD  
LEATHERGOODS**

Traditionally handcrafted  
Footwear & accessories  
Locally designed & produced  
Now offering a wide range of services:

- ◆ Shoe repairs
- ◆ Harness & rug repair
- ◆ Leather bags & tobacco pouches
- ◆ Children's footwear
- ◆ Lawn bowls shoes
- ◆ Design & manufacture
- ◆ Exotic leather goods made to order

Workshop & retail premises located at 3220 Kyogle Road, Mt Burrell, NSW 2484.  
Phone: 02 6679 5041, mobile: 0419 772 897  
Email: lyrebird@better.net.au

**What Gifts Come From Nature?**

- Experience Aveda Hair & Beauty Products now
- Xmas gift packs for your loved ones
- Gift vouchers for him or her



**CURL UP &  
DYE... IN UKI**

*Call your local Hairdresser & Beauty  
Salon now to pamper yourself or  
someone else this Xmas!*  
**6679 5070**

**PJ'S  
WATER DELIVERY**

Mains Domestic Water  
Swimming Pools Filled

**Paul Jensen**

**Ph: (02) 6679 5929**

**Mob: 0429 795 929**

*UKIRA & local businesses  
are wishing you a great Xmas  
& a fantastic 2002!*

**MT BURRELL GENERAL STORE & CARAVAN PARK**

7.30am-7pm Mon to Sat, Sun 8.30-7pm / phone: 6679 7170



For all your

- Local fresh fruit & vegetables
- Groceries
- Liquor



Or relax in the pleasant garden surroundings & enjoy great coffee  
& wholesome homemade meals & snacks at the

**Sphinx Rock Café**  
10am-7pm, Fri & Sat till 8pm



3220 Kyogle Road, Mt Burrell

**PETER PICHELMANN**

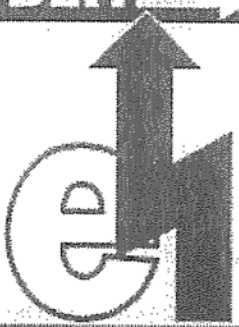
**GASFITTER  
PUMP REPAIRS  
PLUMBER**

Installation Maintenance  
Conversion Repairs

**02 6679 5306  
0418 653 907**

Fax: 02 6679 5750

**BLITZ**



**electrical**

**SERVICE  
INSTALLATION  
MAINTENANCE**

*Jürgen Israel* Mobile: 0419 772 897  
Telephone: (02) 6679 5717  
P.O. Box 194  
UKI NSW 2484

NSW Lic. 88593C / QLD Lic. No. 940B