



An initiative of UKIRA

Issue 2

August 2001

Uki News

Where the mountains touch the sky!

Internet For Everyone

More and more people in the Northern Rivers are finding their way on to the Information Super Highway created by the Internet. But what is the Internet? In addition to being the world's largest computer network connecting people all over the world, it's also the world's largest "library".

Best of all, this library is open 24 hours a day, 7 days a week to anyone who has a computer, a telephone with a modem (to establish a "dial-up" connection) and an Internet Service Provider. And, in the not too distant future, you probably won't even need a computer to have Net access because you'll be able to use your television set! The part of the Net that we actually access is the colourful, informative and user-friendly World Wide Web or Web for short.

You can use the Web for a variety of home entertainment and to save time and money. You can use it to do price comparisons for a whole range of products and services, buy and sell Shares and keep track of how they're performing in real time. Or you can go shopping for wine, books, CDs computers, clothes, gifts for far-flung family

and much, much more - all in the comfort of your own home in your own time.

And, for people with hobbies - it's like striking the 'Mother Lode'. For example, if you're interested in genealogy you'll be able to trace your ancestors by simply spending some time 'surfing the Net'. Or if you're into sports, you can follow your team in real time even if they're touring overseas!

When you use the Net, just think library and how convenient and easy it is to find the information you're looking for in one place whenever you want to visit. And, speaking of Libraries, many of our local public libraries offer free Internet access so be sure to have a bit of a sticky beak next time you visit.

But, my own personal favourite use of the Internet is sending and receiving Electronic Mail or E-mail. It lets me keep in touch with my son in San Francisco, another son in Sydney, my brother in New Hampshire and friends in the USA and England for a whole lot less than the cost of long distance phone calls.

Not only is E-mail incredibly inexpensive, it's also in-

By Lynne De Weaver

credibly fast which means I can write, send and receive messages in minutes to and from anyone, anywhere in the world. I can also send pictures, articles or documents as an 'attachment' without worrying they'll get bent or lost in the mail. I can also forward and reply to my E-mail without re-addressing and I can send the same message to more than one person as well as write and answer mail in my own time.

If you'd like to ask any non-technical questions about using the Internet, or send me a review of your favourite Website to share with our readers, just drop me a line care of this newsletter or better yet, send me an E-mail at deweaver@nor.com.au



Lynne De Weaver is a Marketing Communications & E-Commerce Consultant and is currently serving as the Northern River's Coordinator for the CTC@NSW Project. She is currently assisting UKIRA in their bid to have a Community Technology Centre established at Uki.

Inside this issue:

From the Editor	2
Uki Garden Club	2
Historical Happenings	3
Environment News	3
Sweetnam Park Update	4
Community Diary & Public Notices	4
Good Wood	5
Urban Design	5
New Bus Shelter	6
Mail Box	7
Community Dinner	8
Our sense of place	8

New Hall Trust Committee:

- Jeannette Simpson 6679 725
- Jayne Parrott 6679 5004
- Kevin Donaldson 6679 5041
- Kay Bristow 6679 5795
- Janaki Pearson 6679 7163

Booking details will be posted on the Community notice-board outside Uki Hall. More details in next newsletter.

From the Editor

Hello again and welcome to the second edition of UKIRA NEWS.



Write to the UKIRA Newsletter and have your say published so that your perspective becomes included in the ongoing decision making for the community and this newsletter.

I feel so excited and privileged to be participating with others in this fabulous and alive community to fix a few things up, develop some obvious local opportunities and make the Uki district an outstanding example of a conscious, caring community taking responsibility for the shape of its own future. Thank you to the myriad of good people out there who give and put in for the betterment of all.

Join in, participate, get involved. Many projects around the Uki district have been identified and there are many ways to participate. You could start by coming along to the Uki Spring Dinner at the hall and enjoy meeting the neighbours - don't wait, tickets will go fast.

A big thankyou to all those new contributors in this edition for the outstanding articles and information. We are looking forward to more from you in future editions. And we want to hear from you, our community residents.

You have of course noticed the inserts that came with your Newsletter. Please be assured that we will restrict the number in each edition to about five (at the most). This service is available to advertisers at \$25 for an approxi-

mate distribution of 1000. Community organisations may insert for a reduced rate.

Commencing with our next edition, advertising space will be available at moderate rates. Please call me for information and to discuss your needs. Also in the next edition we will publish a Community Diary of upcoming events, meetings etc - so let me know what you want.

And finally I wish to extend a huge welcome and thankyou to Tessa Martin who has helped hugely in getting this newsletter out with her creative publishing skills. Tessa's contribution to this Newsletter will ensure improvement with every publication.

Until next time!
Edwin Macpherson

Uki Garden Club

Did you know Uki has a thriving Garden Club? Established in August 1998, the Club is now a growing concern, with members ranging in age from 6 months to 95 years. Membership costs just \$20 per family and runs from August to July each year - it's not too late to join!

Our philosophy veers towards organic gardening, worm farming and composting, vague permaculture, companion planting and native plants but we are also mad keen on flowers, fruit and vegies and exotic annuals, perennials, trees and shrubs.

We meet on the last Saturday of every month (except December) at 2pm, to discuss plants, gardens and pests and diseases in a friendly and informal en-

vironment. One of the best features of the club is the swap shop, where an amazing variety of plants, produce and seeds can be had for a small coin donation. Another excellent asset is the club's library of gardening books, donated by national and international publishers and the members themselves.

If funds permit we go on bus trips to nurseries, garden festivals and expos, and sometimes we have a guest speaker. Joint adventures with some of the other 16 gardening clubs in the north coast region also take place oc-

asionally.

The venue for the meetings is different each time because members take it in turns to host the monthly gathering (although this is entirely voluntary not compulsory). After the meeting we wander around the host garden, enjoy a superb afternoon tea, and buy a ticket for the monthly raffle.

For details of the next meeting contact President Lyn Reid on 02 6679 5238 or newsletter coordinator Julia Hancock on 02 6679 5414.

"While wondering through the host garden we enjoy a superb afternoon tea and draw a ticket for the monthly raffle."

Historical Happenings

Uki and South Arm Historical Society is delighted to announce that it will soon have a garden to grace its museum in the village.

The Society has been given the go-ahead by the Hall Trust to install the garden, designed with the assistance of the Uki Garden Club, and work is scheduled to commence towards the end of August.

Plants and materials for this

project have been donated by private individuals and businesses the manual labour will be undertaken by the Work for the Dole Team.



The garden has been designed to be ultra-low maintenance and the little work that needs to be done will be the responsibility of volunteers from the community in conjunction with the Historical Society.

The Society meets on the second Saturday of each month at 10am at the museum building in Uki, and new members are always welcome.

Please phone Dot Lange (President) on 6679 5126 or Mary Roberts (Secretary) 6679 5157 for more information.

Environment News

By Penny Watsford & Sue Phillips

The Environment Committee's focus is to encourage Uki residents to live sensitively with the environment. We are fortunate to live in a wonderful setting: beautiful mountain scenery, the nearby river and unique natural vegetation. Our aim is to increase people's awareness of the privilege of living here in Uki so that they'll gladly take steps to preserve this special place.

The first project we undertook was to produce a leaflet titled *Environmentally Sensitive Gardening*, educating folk about the dangers of garden plants that escape and degrade the native forests. The leaflet was printed with the generous financial assistance of Friends of Wollumbin Landcare Group (Ph. 66 795 544), and costs of distribution were met by Tweed Shire Council. We received very positive feedback from many sources and are delighted to report that the Tweed Shire Council plans to use our leaflet as a model to produce one for the use of the whole shire.

The next project will be to support the Work for the Dole Team to establish a

"Tweed Shire Council plans to use our *Environmentally Sensitive Gardening* leaflet as a model for the Shire."

demonstration garden in Sweetnam Park. In the garden, some of the plants mentioned in the *Environmentally Sensitive Gardening* leaflet will be grown so that residents can see what they look like when deciding what to plant in their own gardens. Julia Hancock of the Uki Garden Club has offered her enthusiasm and considerable expertise to aid in the planning, establishment and maintenance of the garden.

We also assisted Janaki Pearson with the onerous work required to put in a Green Corps application, which unfortunately was unsuccessful. Janaki has been rehabilitating forest on the riverbank behind the Uki Buttery over many years. Anyone who would like to assist her with this worthwhile project could phone her on 66 797 163.

In order to maintain Uki's clean, green image, all Town Centre Projects need to adhere to the highest environmental

standards. The Environment Committee has a role in offering input to the other committees where environmental issues are concerned.

A myriad of environmental issues in Uki need attention. We do not believe that we should be the only people working in this area and are keen to network with other similar groups, and also to encourage any environmentally minded folk to be active in whatever way suits them. Please get in contact with us, perhaps we can help you. We'd like to know who is out there, so that we can all work together.

(Contact Penny Watsford on 66 795 257)



Sweetnam Park Update

Native Plants & Picnics

Following the formation of a steering committee to oversee the transformation of Sweetnam Park into a unique recreational facility, plans for development are underway.

The committee, comprising Julia Hancock from Uki Garden Club, and Penny Watsford and Sue Phillips from Uki Environment Group, has secured a commitment from Council to supply plants and materials.

Stage One comprises a Native Plant Demonstration Garden to be installed adjacent to the dip site, and a carpark (with appropriate shade trees) to be constructed at the Lange Road end.

The Garden will feature plants that are endemic to the Tweed Valley, many of which are rare and endangered. The planting will attract a variety of native fauna, and the planting plan will incorporate suitable habitats for them.

The committee has applied for a

\$1,000 grant from Australia's Open Garden Scheme to fund the erection of a display board, similar to those constructed by National Parks, to house a planting plan and information on the flora and fauna in the Garden.

Stage Two includes the installation of picnic tables, supplied by Tweed Shire Council, and possibly a composting toilet. Discussions are also underway with the staff from Uki Dreaming to construct a garden featuring native bush essence plants.

For more information on the project contact Julia Hancock on 02 6679 5414 or hancock_julia@hotmail.com.

Work For the Dole Begins

A Work For the Dole (WFD) team has already come together ready for their various projects around Uki. Steve

Foreman, a Uki local, has proven to be a very popular choice as the Supervisor

of the team and comes to the position with a wealth of experience in environmentally sensitive construction, bush regeneration and team management. Congratulations Steve and we all look forward to watching the program unfold over the coming months.

As part of our community interaction with the WFD team we will be holding a monthly lunchtime Bar-B-Q for the team at the hall park where anyone from the community is welcome to come and join in, ask questions and throw in your two bobs worth.

Thanks to all those who have donated food, time and equipment for these team building lunches.

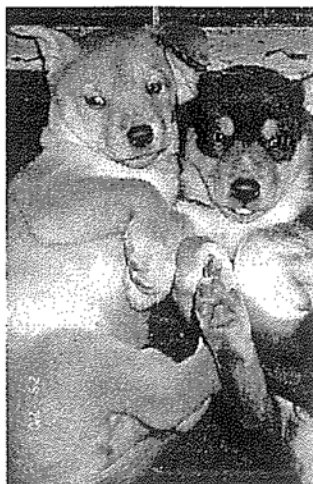


Community Diary & Public Notices

We need you!

Uki News is a publication for the Uki community by the Uki community, so email us now if you have any important events or meetings for our Community Diary in the next issue of the newsletter.

Or if you have anything for the Public Notices section, please email Edwin: starlight@better.net.au or phone 6679 4232.



FREE 1/2 DINGO PUPPIES

WE ARE ADORABLE PUPPIES, BORN 19TH JUNE.

OUR MOTHER IS A PET DINGO AND OUR FATHER IS A BITSER ! (CATTLED OG)

PLEASE CALL TESSA ON 6679 7060 IF YOU CAN GIVE US A GOOD HOME!

Good Wood

Flying the Uki flag at the NORCO factory on the Highway at Murwillumbah during the first week of September is William Marshall of King Camphor & Co.

On display will be logs, sawmills, timber, slabs, sculptures and wooden art. Featured is the Bandsaw built by "Sawmill Re-evaluations" David Douglas. This portable machine with world patented features will amaze you. See Redgums & Brushbox saved from the new Highway, salvaged Camphor Laurel,

Silky Oak, Silver Ash and others turned into kits for post and beam buildings, slabs for tables, bench tops, stairs, furniture etc. Being sawn for Uki will be the timber for the new bus shelter and picnic tables in Sweetnam Park. If you have a tree to be sawn or building or timber requirements come and see William at NORCO on the Banana Festival weekend or phone 0401 647 639.

***This could be
YOU!!!***

***Contact Edwin now
on 6679 4232
to secure
your advertising
space in our
next issue!***

Urban Design



Pathway to Sweetnam Park

Despite extensive lobbying by local residents, the Sweetnam Park pathway will not be included in Tweed Shire Council's Works Program for 2001/2002.

Council has indicated that the proposal for the pathway, which will link Sweetnam Park to Uki village, will be given a higher priority when proposed enhancements at Sweetnam Park have been completed.

However, following protests from the UKIRA Urban Design committee, which highlighted the very narrow and dangerous access alongside Kyogle Road, Council has agreed to undertake some interim work on the path this financial year. Acknowledging the particularly dangerous section from Smiths Creek Road to the crest of the hill, the work by Council will completely bypass this section by routing the path across the paddock below. The path will be laid with gravel.

The committee has also brought to

Council's attention the difficulties being experienced in crossing Kyogle Road at the Smiths Creek Road intersection. Council has agreed to carry out additional work in 2001/2002 that will make this crossing safer.

Signage

You may have noticed new signs gracing the approaches to Uki village. The signs are in keeping with the Tweed Shire Council's theme for the valley and incorporate the new Uki slogan "Where the mountains touch the sky".

The Urban Design committee will be meeting shortly with community representatives from Chillingham and Tyalgum in an attempt to identify deficiencies in signage affecting our local districts and to make recommendations for improved signage. Any suggestions should be directed to Jeanette Simpson on 66795725.

Later this financial year Council will commence work on the next stage of the Kyogle Road upgrade between Uki and Murwillumbah. This will involve a

section of road between Glenock and Braeside and also a section near Tall Gums.

Changing Lanes

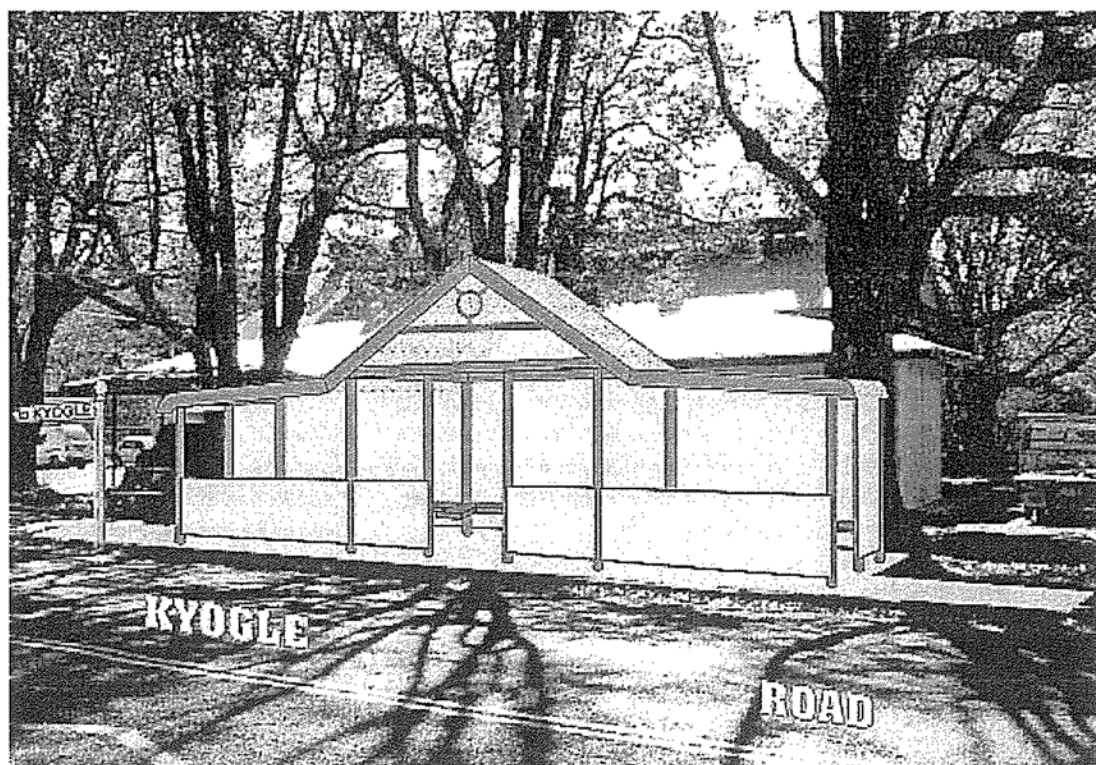
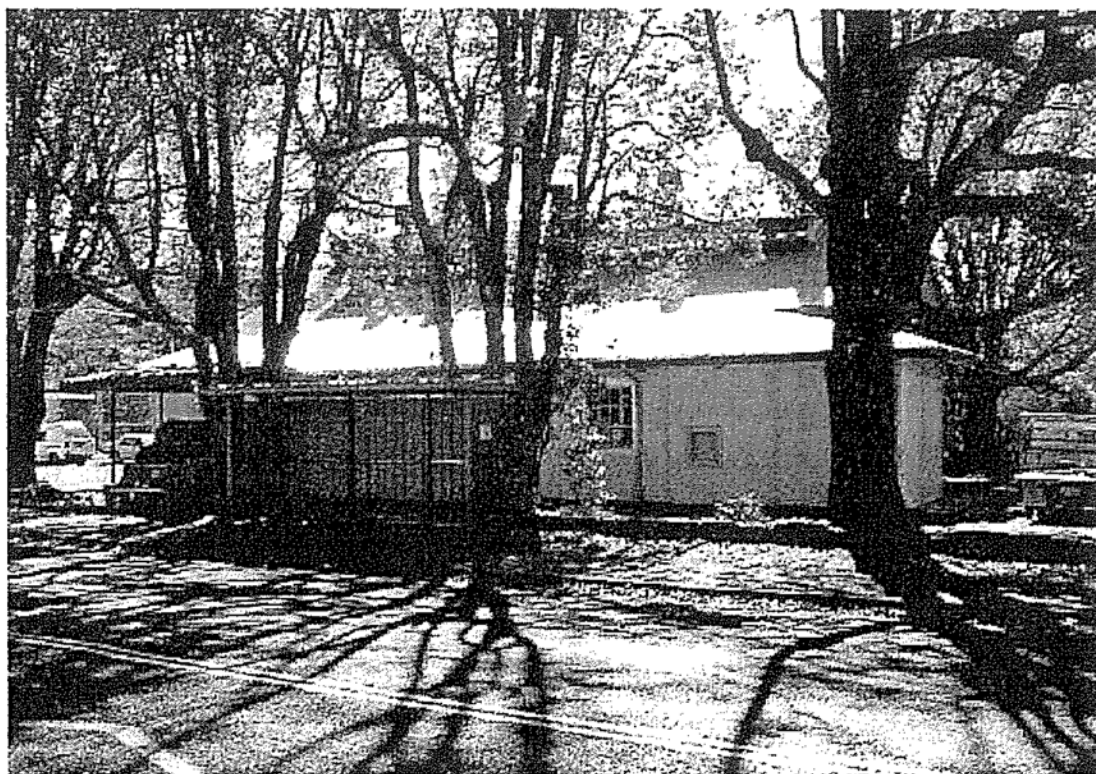
Council's Traffic Committee has given the green light to a proposal to reverse two overtaking lanes along Kyogle Road between Uki and Murwillumbah. This work, which involves reversing the first and third overtaking lanes, will be done concurrently with the Kyogle Road upgrade late this financial year.

Council is currently undertaking survey and design work in an attempt to find a solution to the traffic safety problems that exist at the Grants Road/Mitchell Road intersection (contact Colin Funch 66795747) Council's Works Program for 2001/2002 makes provision for completing the seal of Rowlands Creek Road (contact Philip Carr 66795855).

***New signs
incorporate the
new Uki slogan
"Where the
mountains touch
the sky".***

Proposed New Bus Shelter

The existing bus shelter in front of the Buttery in Uki will soon be replaced by a brand new one. If you'd like to comment on the newly proposed design (see below, the existing shelter and the new concept drawing), please feel free to contact Cath Donaldson at work on 6672 6130 or at home on 6679 5041. Please give her your feedback no later than the first week of September.



Mail Box



Cr Lynne F Beck, Mayor

'Cloverdale'

TYALGUM 2484

Telephone: Home (02) 6670 3204
Council (02) 6670 2401

Fax: Home (02) 6679 3204
Council (02) 6672 8029

Email: mayor@tweed.nsw.gov.au

L
L2105jg.466

25 May, 2001

Mr. Edwin Macpherson
Editor Uki News
CA- Uki Village & District Residents Assoc Inc
P O Box 141
UKI 2484

Dear Mr. Macpherson,

I received a copy, Issue 1, of your "Uki News". I found it very interesting with all the news of what is happening "where the mountains touch the sky".

The village of Tyalgum has had its own newspaper for some time now and it is also serving the people with news and articles, what's on in the future. It certainly makes the village a closer knit community. They have advertising to cut down on costs.

Thank you for the copy and I hope it will go to help you make your beautiful village even a better place to live.

Yours sincerely,

Councillor Lynne F Beck
MAYOR



CIVIC AND CULTURAL CENTRE, MURWILLUMBAH
PO BOX 816, MURWILLUMBAH NSW 2484
TELEPHONE: (02) 6670 2403 - FAX: (02) 6670 2429
WEBSITE: <http://www.tweed.nsw.gov.au>

ABN 90178732490

YOU ARE INVITED TO A

Friends of Uki

UKIRA - Uki Village and District Residents Association Inc.

Spring Dinner

AT UKI VILLAGE HALL
ON THE 15th SEPTEMBER



\$15 Head
Children - half price
B.Y.O.
6:30pm start
3 Course buffet
Raffles / Music
Prizes

TICKETS AT *Uki Dreaming*
ON SALE 23RD AUGUST

BOOK EARLY!



**If your answer to
any of these questions is YES...
...you could win a
\$100 SHOPPING VOUCHER**

- QUESTION 1: Does your child ever go home to an empty house after school?
- QUESTION 2: Do you stress about running late to pick up your child after school?
- QUESTION 3: Do you find you just don't have enough time each week to do the shopping, pay the bills, do the housework, see your friends, etc?

If you answered 'YES' to any of these questions, you are possibly not aware that every day after school many local kids are being cared for in a safe, creative, fun environment at

Uki After School Care

Fully qualified staff
Extremely affordable.
Buses from other schools
Children collected from buses
Located within Uki Public School
Government approved and subsidised
Available to all children from any school
Emergency, casual and permanent bookings

For enquiries please telephone 66795128

And here's how to win the \$100 shopping voucher.

If your child attends the Uki After School Care Centre just once before 31 October 2001, your name will go into the draw for a \$100 Shopping Voucher from:

Curl Up and Dye in Uki (\$20 limit)
Uki Shopping Centre (\$20 limit)
Uki Dreaming Shop (\$20 limit)
Uki Dreaming Café (\$20 limit)
Uki Post Office (\$20 limit)



Good luck!



COMMUNITY SURVEY

Background - Funding is available through a joint State/Commonwealth Government program to set up Community Technology Centres (CTC) in rural and regional areas. UKIRA with input from Chillingham village is interested in establishing a Community Technology Centre (CTC). A CTC could provide services such as access to computers for word processing and the Internet, computer training facilities, videoconferencing, online education, equipment hire, computer help and services for small business.

Reason for survey - Part of the application process is to prove that there is a need for technology services in the local community. We need to determine the interest of the community in establishing a CTC with outreach centres to surrounding villages.

How to complete the survey - Please tick the appropriate box and add comments where necessary. Please return this two page survey by (nominate date) to (nominate where). Thank you for participating.

SURVEY

1. Please state the town/village that you live in: _____

2. Please indicate your age group with a tick: 0-14 ____ 15-24 ____ 25-49 ____ 50+ ____

3. Do you currently have access to a computer? YES ☐ NO ☐

If yes, where?

Home ☐ Work ☐ School ☐ Elsewhere _____

4. Do you currently have access to the Internet? YES ☐ NO ☐

If yes, where?

Home ☐ Work ☐ School ☐ Elsewhere _____

3. Here is a list of services that might be provided at a Community Technology Centre. Please indicate **which services you currently use** and **which services you would be likely to use if they were available locally**.

Service	CURRENTLY USE	LIKELY TO USE
Email (eg business/contact with relatives or friends overseas or interstate)	<input type="checkbox"/>	<input type="checkbox"/>
Short courses on how to set up web page, do Microsoft Powerpoint, Microsoft office, set up a database	<input type="checkbox"/>	<input type="checkbox"/>
Online banking	<input type="checkbox"/>	<input type="checkbox"/>
Government services online	<input type="checkbox"/>	<input type="checkbox"/>
Share trading	<input type="checkbox"/>	<input type="checkbox"/>
Finding information on the Internet	<input type="checkbox"/>	<input type="checkbox"/>
Networked games	<input type="checkbox"/>	<input type="checkbox"/>
Videoconferencing for Meetings or medical/legal appointments	<input type="checkbox"/>	<input type="checkbox"/>
Technology used for conferences and small meetings such as Venue, Data projector, TV/Video player	<input type="checkbox"/>	<input type="checkbox"/>
After school study centre with Internet access	<input type="checkbox"/>	<input type="checkbox"/>
School holiday programs using computers	<input type="checkbox"/>	<input type="checkbox"/>
Internet training	<input type="checkbox"/>	<input type="checkbox"/>
Other computer training	<input type="checkbox"/>	<input type="checkbox"/>
Online or videoconference access to University	<input type="checkbox"/>	<input type="checkbox"/>
Other courses	<input type="checkbox"/>	<input type="checkbox"/>
Advice for purchasing computers/choosing a service provider	<input type="checkbox"/>	<input type="checkbox"/>

Advice on where to go with a computer problem	<input type="checkbox"/>	<input type="checkbox"/>
Hiring of equipment such as a digital camera or video/data projector	<input type="checkbox"/>	<input type="checkbox"/>
Video production facilities	<input type="checkbox"/>	<input type="checkbox"/>
CD production facilities	<input type="checkbox"/>	<input type="checkbox"/>
Office equipment (eg laminator, binder, photocopier, printer)	<input type="checkbox"/>	<input type="checkbox"/>
IT Serviced office/hot desk e.g for mobile workers	<input type="checkbox"/>	<input type="checkbox"/>
Advice on operating a business over the Internet	<input type="checkbox"/>	<input type="checkbox"/>
High quality equipment for business such as colour printing and scanning	<input type="checkbox"/>	<input type="checkbox"/>

5. What other technology services would you like to have available locally?

6. Is there anything that is preventing you from learning more about using computers at the moment?
Tick which ever is applicable e.g.

- ♦ No need to learn as I don't use a computer ☐
- ♦ Already know all I need to meet my computer needs ☐
- ♦ Not interested ☐
- ♦ Have some fears about new technology ☐
- ♦ Don't own a computer or have access to one ☐
- ♦ Don't have enough time ☐
- ♦ Cost of buying a computer ☐
- ♦ Cost of attending courses ☐
- ♦ Transport problems ☐
- ♦ Safety issues about location of courses ☐

7. Do you support the idea of establishing a Community Technology Centre locally?

YES ☐ NO ☐ If no, why not? _____

8. Do you think you would use a Community Technology Centre?

YES ☐ NO ☐ If no, why not? _____

9. Any other comments?

Thank you for participating.

Please return your completed survey by (date) to:

In person -

Mail - P.O Box 141 : UK1

Fax - 0266795101 (Fax)

UK1

30/8/01

UK1 Post Office

An initiative of UKIRA

PO Box 141 Uki 2484

Phone: 02 6679 5041
Fax: 02 6679 5101
UKIRA email:
ukira@better.net.au
Editor Email:
starlight@better.net.au

Where the mountains
touch the sky!

Email us your contributions
now for the next issue!

Community Dinner Unplugged

Following on from the huge success of the first UKIRA community dinner, a second evening is being planned for September 15 at the Uki Hall.

Tickets are available at Uki Dreaming on Kyogle Rd across from the Buttery at \$15 per person for an evening of unplugged (acoustic) musical entertainment.

Numbers are limited to 150 so get in early and come along for a fabulous night of community spirit and fun. Bring your own acoustic instrument or drum and alcoholic refreshment and meet the neighbours.



“Our Sense of Place”

The Tweed Shire Council Centenary of Federation Committee in partnership with Tweed Valley Banana & Harvest Festival has conducted a project to assemble a 2001 time-capsule of flags and banners from the Tweed Valley in 2001 as part of Federation celebrations and events. Many local artists participated in the workshops with over one hundred flags and banners being created. Local artist **Mina van Bree** shares her experience:

“From the start it promised to be a challenging and exciting project; and it was. We cleaned the decks, brought out the paints and went for it. Flag after flag, banner after banner and then we came to the big one. A piece of cake.

Sounds easy, doesn't it? Well in a way it was. It was the time and effort that leads up to it that was the most time consuming and sometimes frus-

trating. But, as time went on during the two workshops we became more confident and proficient. And we all agreed that the Banner and Flag Making project for the Centenary of Federation in Uki was a success.

Ah, but what have the other communities done? Did they have the lovely and co-operative Gabriella Soelkner. Or a Barb and Gloria who showed up on the second day with a workable solution? Did they have a Lorna McIntyre who donated lots of calico for the school to make their banners? Or willing participants who had never painted a picture in their lives. Who knows?

No doubt their work will be wonderful too and it will be a great day when we see all the flags and banners flying together. One such occasion will be the Parade during the Banana and Harvest Festival. Oh, and I can't wait

to see what the Uki Primary School has created as their 'Sense of Place'.”

Wave the Flag for Uki

Many flags and banners have been created from the Uki art contingent and Uki and district residents are invited to carry flags and banners at the upcoming Banana & Harvest Festival. Actually it's more than “invite”. We need people to assist on the day with waving the flags. If you would like to participate please call Mary Lee Connerly on 6679 5369 (evenings). Why not make an outing of it and carry flags with your kids. There will be over one hundred flags and banners in the parade and will only take up to two hours at the most.

