



An initiative of the Uki and Districts Residents Association (UKIRA)

Issue 107 / August 2019 / September 2019

Edith Steiner

New Bridge nears Completion

Jai Morrison

Construction of the new bridge over the Tweed River at Byrrill Creek Road is nearing completion after Tweed Shire Council obtained sufficient funding under the Bridge Renewal Program following the March 2017 floods which swept away the low level temporary timber bridge.

Some long term residents expressed concerns about the design of the new bridges concrete sidewalls with questions about the potential to create an extra barrier to flood waters and the loss of visibility of the picturesque river scene.



Tweed Shire Council's Senior Engineer - Construction, Nigel Dobson met with some residents at the site to explain the considerations and constraints of the design in detail.

Nigel explained that "a number of new bridge options were hydraulically modelled by Catchment Simulation Solutions to comply with the Australian Standard AS 5100. This model was calibrated to historical flood data, including the March 2017 flood. The final bridge design (including concrete barriers) was selected as it resulted in negligible changes to flooding whilst remaining economical. During moderate to major flood events, the flood waters will significantly overtop the new bridge; there will be a localised increase in water velocity due to the new bridge but no measurable increase in flood height. During minor flood events (events that occur every 2-5 years), there will be a localised but minor increase in upstream flood levels until the waters overtop the bridge. The concrete approach barriers are designed to force the flood waters to overtop the bridge in the centre of the river and keep the peak water velocities where they should be. Allowing water to flow around the bridge barriers creates increased water velocities at the river banks which causes increased erosion and increases the risk of the road approaches washing away.

The concrete barriers are stronger than other barrier types (such as steel rails) which are needed for the extremely high flood velocities in this part of the river. The concrete barriers will not catch or

collect as much debris as steel rail barriers, which reduce the flood loading on the bridge and allows approximately the same passage of water. It also makes it easier to clear debris from the bridge after a flood. Water drainage off the bridge deck is similar to other bridges in the shire, such as Byangum Bridge which uses concrete kerbs and a similar scupper arrangement. Drainage under the approach barriers will also be provided so that increased water flow onto the bridge deck does not occur.

Between safety considerations, flooding considerations and cost considerations, there was not much scope for creating a view for drivers", Mr Dobson said.

One resident suggested that Tweed Shire Council sponsor a mural painting project similar to the Treasures of the Tweed project on Commercial Road, Murwillumbah, to re-create the river scene which has previously featured on postcards.



From the Editors

Welcome to Uki News Issue 107, the publication that not only informs but provides a platform for Uki residents to contribute to all things Uki. Regular readers of Uki News will be familiar with the articles that Judith Magee has written for the Uki News over the years. As a regular contributor from the earliest Issues of the Uki News Judith has decided to

step aside from further contributions. Uki News would like to thank Judith for her input over the years with offerings of holistic health information and advice. Judith has thrown open the invitation for a new contributor to take up the reins and continue where she leaves off.

If you are a new arrival to the Uki area or never contributed to the

Uki News before, please consider becoming a contributor. As a bi-monthly publication there is plenty of time to consider and compile before each contribution deadline.

If you have a local business, please consider supporting Uki News by submitting an advertisement in future Issues. Rates are very reasonable.

The Editors



Contact Uki News: theukinews@hotmail.com

ADVERTISING

Business card size	\$25	Half page	\$90	All Advertisers will receive an invoice Advertising revenue helps fund the Uki News
Quarter page	\$55	Full page	\$175	

Disclaimer: The opinions and views expressed in this newsletter are not necessarily those of the Uki News nor of UKIRA.

Uki News is printed by Uki CTC. Current and past issues are available from the Uki Village and District Website.

Letters To The Editor



We'd love to hear from you... Send your letters to theukinews@hotmail.com.

A few truths about water mining

Pat Miller

I have been working with the Tweed Water Alliance's campaign against water mining in our shire for some time now, remaining deliberately absent from the Uki News. However I'm breaking that silence because Chinese Whispers mean the message is being muddled, sometimes deliberately. Our social media presence is beset with red herrings that sometimes seem more important than the big issue. I want to set matters straight on a few subjects.

The level of opposition – it is indeed better than 99%. The Tweed Water Alliance with help from our local supporters conducted a door-to-door survey to determine the level of opposition to water mining. We covered most of Uki and surrounds with a sample size of 520 people answering a simple and reasonable question, "Do you support or oppose water mining?". The 2016 census puts Uki's population at 696 with the Tweed Shire Council predicting the population of the South West

Local Government Area will be 2246 in 2019. The local government area is much bigger than the Uki demographic area. On both counts we stand by the validity and accuracy of the survey. Indeed, confidently, 99.6% of Uki residents oppose water mining. Because some people weren't surveyed does not mean our result is invalid.

There were 488 written objections to DA 19/0346 lodged with Tweed Shire Council by closing date.

Trucks:

If DA 19/0346 is approved there will be 32 truck movements a day through Uki and Murwillumbah to Yatala. It appears that other water miners are waiting in the wings to see how this will play out. The noise assessment is breathtaking in its naivety or cavalier apathy in stating (p2):

"the proposed increase in truck movements from 12

continued on page 11

Uki Kids' Club

After School Care



Uki Public School
OOSH

Creative program, Outdoor fun, Physical activities (Dance, Yoga, Ballsports etc.), Lots of Games, Cooking sessions ...

Heaps of fun for your children, while you get a few hours to yourself.
6679 5128, 6679 5024 3pm-6pm
Quality accredited care
CCB subsidy available

TWEED
VALLEY

Denture Clinic

- Full Dentures
- Full Dentures over Implants
- Partial Dentures
- Relines
- Repairs
- Mouthguards

Ian Kingston - Dental Prosthetist

131 Main Street, Murwillumbah,
Phone 6672 4618

(next to the Imperial Hotel, Wheelchair Access)

Relationship Health:

Mindsets and Relationships strained by negativity and fear

Heather McClelland

Factfulness, the 2019 book by Swedish researcher Hans Rosling, has helped me better consider the daily barrage of stressful news and questionable data that impacts us all. Faced with an issue that really troubles her, a friend of mine sits down and writes a letter. Taking action in the face of disempowerment clears and de-clutters the brain allowing forward movement.

Keep two thoughts in mind, says Rosling. Negative and highly dramatised statistics are employed by media, politicians and by some activists. It might be a fact that 20% of Australian children are not reaching benchmarks. We can think about the opposite ie; that 80% are reaching their benchmarks. We can then recognise the data provides new focus for improvement.

I am comforted by figures about plane crash deaths and crime rates. Between 1929 and 1933 annual deaths per 10 billion passenger miles stood at 2,100. From 2012-16 it was 1! In America 14.5 million crimes took place in 1990 and 9.5 million in 2016. Preventative measures work. A similar reduction took place in Australia.

Progress across the world has been amazing.

- Due to a digital surveillance system of flood monitoring, Bangladesh is able now to evacuate people as cyclones and floods hit, when back in 1942 two million people would die.



- Because of recognition by governments across the world of the importance of education for women, today 90% of girls and 92% of boys across the world receive at least a primary education. This has hastened a multitude of other improvements.
- Child mortality rates, an accurate barometer of the health of a country, have plummeted. Vaccination against prevalent diseases is the one single factor that has ensured the survival of children 0-5yrs in all but isolated tribal communities. Australia's lead in creating a vaccine against Malaria is the latest astronomical difference-making achievement!

We can have a constructive and realistic view of our world and be more able to be grateful and happy. After all In 1962 there were 200 guitars per every million people across the world. In 2014 there were 11,000.



PLAY GOLF CROQUET

contact

Murwillumbah Croquet Club

RING: 0410 187 984

NEW PLAYERS WELCOME

Join Now

- Easy to start
- Social - all ages
- Play singles or doubles
- Low cost
- Enquiries: 0410 187 984



Pest Control



Termites



Inspection



Termite Baiting Systems



Funnel Ants

PEACE OF MIND
TERMITE & PEST MANAGEMENT
YOUR PEACE OF MIND IS OUR BUSINESS

FUNNEL ANTS CAN BE CONTROLLED
12 MONTH GUARANTEE
Success rates of 2-4 years control
from one treatment

ASK US HOW
07 5524 5550
We have an operator based in UKI

Human Survival Theories

Robert Pope

The Science-Art Research Centre at Uki has had its human survival theories accepted as providing the Scientific Direction of The European Academy of Natural Sciences. The Centre's discovery that the world's seashell fossil record containing Plato's sacred geometrical mathematics evolved to infinity. DNA information was proven to be correct when the 2013 European Space Planck Observatory photographed that the First-Light in the universe was generated by a living electromagnetic field rotating anticlockwise instead of Einstein's conviction that it belonged to a quantum mechanistic field rotating clockwise. The Centre's Director, Robert Pope was able to associate the evolution of artistic emotion as being linked to the electromagnetic evolution of the earth's biosphere. This discovery provides for a completely new future for science and technology to harness climate change for the betterment of the global human condition. However, until Einstein's world-view is balanced by First-Cause dynamics such a human survival science cannot be obtained.

Pope and the Centre's, Robert Todonai, who was placed in the top 10 of an international USA Robotic Art Completion in 2018 for building a robot that paints, were both awarded Artists-in-residencies in 1986 at the University of Sydney. They were appointed to work with cancer researchers repeating Louis Pasteur's bacteria experiments. In 1857 Pasteur published that the crucial First-Cause principle was generated by a living universal electromagnetic field rotating anticlockwise. The Centre's discoveries now show that there are two sciences, a tribal one compelled to obey the survival of the fittest law evolving intellect though the waging of war and another obeying DNA information that all tribes belong to a single species and provides the neurological antidote to resolve this scientific dilemma.

The Science-Art Centre in Australia, in liaison with the World Fund for Arts, Pavia University's Department of Medicinal Chemistry and the International Quantum Art Movement have selected a stereoscopic art collection far more visually perceptible than any at the Dali Stereoscopic Museums throughout the world. By simply viewing a single painting through inexpensive asymmetric electromagnetic viewing glasses, Plato's human survival message, hidden within plane geometry for some 2400 years is instantly

revealed. In particular one painting depicts several interlocking dimensional planes with a curved artistic form traversing through all of them (Pope. R. 24 May 2019).

The Science-Art Research Centre will donate the initial holographic art collection if a permanent tourism venue for it is made available. Both its Director of biological Science-Art Research, the author of this paper and its Director of Artificial Creativity, Robert Todonai, in the past have been selected for representation by the world's largest commercial art gallery.

They are conversant with the use of Numeral Historical Provenance Documentation to be used to represent the establishment of the 21st Century Renaissance and the complex reproduction of original artwork into new lawful originals to be used to franchise further sister venues throughout the world. The Centre has no wish to accumulate wealth. The new Stereoscopic art galleries concept is the development of the Centre's Self-Funding Science-Art Project outlined during 1993 in the International Journal for the Arts, Sciences and Technology LEONARDO (Pope. R. 1993).



**The Science-Art Antidote to a Carcinogenic Society:
Cancer, Climate Change, and Asymmetrical Solutions**

By Professor Robert Pope

Director of the Science-Art Research Centre of Australia Incorporated
pope@science-art.com.au www.science-art.com.au

6 July 2019



ART POST

uki

A surprising place for surprising art
Only at the Uki Post Office
Artpostuki.com

UKI POST OFFICE

GARY ★ PIP ★ LAURA

Monday – Friday 7am - 5pm

Saturday 7am - 12pm

Sunday 8am - 12pm

T: 6679 5101

Bastion Lane Espresso | Art Post Uki



All about 5G Technology

Louise Bally

The term 5G stands for 5th Generation technology and is entirely different to the 5 GHz frequency used by most Wi-Fi routers. Combined with 2.4 GHz, both frequencies are already known to cause negative biological damage due to radiation. Hardwiring your computer to your modem or router and turning off these Wi-Fi functions will make your home and office a healthier environment. Wi-Fi router radiation guards are now available that will block between 90% and 95% of the RF Radiation they emit without interrupting the signal.



Many people have confused the 5 GHz Wi-Fi signal for 5G due to the 5G at the end of the network signal's SSID (Service Set Identifier) leading people to believe they already have 5G.

Around the world the new 5G wireless technology is starting to be deployed, offering speeds up to 20 times faster than the present 4G network. The roll out will require new hardware radios designed specifically to support 5G and different from the fixed broadband technology the NBN offers and the current 4G technology. Routers and phones we are using now will not have 5G capability nor will they become compatible with firmware updates. All hardware will have to be replaced when 5G becomes available.

In the future 5G will be extensively used for public safety for CCTV coverage and remote policing, automated vehicles, remote control of devices, home automation, health care and state of the art surgery.

What you need to know about 5G

5G produces much higher intensity, shorter length

millimetre waves (MMV) compared with 4G waves which do not travel far and are disrupted by buildings requiring a massive network of mini cell towers in built up areas, typically one on every 2 to 8 houses. 5G is projected to support up to a million devices per square km thanks to multiple mini towers to be installed on the sides or tops of buildings and on street light poles. This will greatly increase our RF Radiation exposure.

Among the dangers to health and the environment, 5G is believed by many doctors and scientists to contribute to:

- eye cataract and retinal damage
- skin damage
- immunity and metabolic dysfunction
- risk of cancer, depression and sterility.

Insect populations may be impacted affecting the survival of many species of birds and bats. Changes in bacterial resistance (already apparent in high radiation environments such as hospitals) could increase in built up areas that have 5G infrastructure. Damage to flora would also impact our wildlife and the air we breathe.



Geneva blocks the erection of 5G mobile antennas

Extract courtesy Le News 02/05/2019

Last week, Antonio Hodgers, the head of Geneva's executive, announced a ban on the erection of further 5G mobile antennas in the canton, according to an interview on RTS. Motivated by uncertainty on the potential health effects of the new technology, the temporary freeze is the most the cantonal government can do to stop the rollout of the technology.

Switzerland's federal government in Bern calls the shots when it comes to the overall plan on 5G rollout. The cantons are only responsible for putting the plan into action.

While the new 5G antennas being installed meet the regulations issued by Switzerland's federal government, Hodgers, a member of the Green party, thinks a broader public debate is required, one that looks at the effect of the radio waves emitted by all of the mobile antennas installed rather than 5G ones alone.

<https://lenews.ch/2019/05/02/geneva-blocks-the-erection-of-5g-mobile-antennas/>

Uki
Supermarket
Friendly service....

Groceries Fruit & Veg	Ice
Gluten-free & Organic Products	Fuel
Meat	Gas
	DVD hire

Open weekdays 7.30am to 6pm
Sat & Sun 8am-5pm
Main Street, Uki Ph: 6679 5136

Open 7 Days for Lunch and Dinner
OFFER: \$12 Dinner Specials, Pizzas
Pool Comp Wed, Trivia Thurs,
Jackpot and Raffles Fri.

Email: info@mountwarninghotel.com.au
Website: www.mountwarninghotel.com.au
Facebook: Mount Warning Hotel Uki
Instagram: mountwarninghotel

1497 Kyogle Road,
UKI NSW, 2484

Bottlemart

Hotel: (02) 6679 5111

Man Must Never Lose Sight of the Stars

Lorraine Lintern

An interesting article found in the 'Healing Times' magazine recently gave me much to contemplate.

Since time immemorial man has gazed into the void reading the movements of the stars across the night sky. He related them to the phases of the moon and through the millennia of his observation man applied his energy and awareness to the soil. He came to understand the inner workings of nature and of his place and purpose in the universe. Within this knowledge he found himself in harmony with the endless energy of the divine cosmos. Pagan calendars evolved from this and designed into them was the reflection of man's relationship with the entire cosmos. These calendars gave him times of work, rest and celebration of life and this knowledge and system operated throughout the known world for thousands of years.

In 46 BC Emperor Julius Caesar decided to do away with the pagan system and introduce the Julian or 'perpetual tax calendar'. This civil instrument unified tax collections throughout the Roman Empire getting all taxpayers on the same page. However there was a minor discrepancy of 0.002% in the Julian calendar which meant that over time the discrepancy gradually moved Easter away from the spring equinox.

In 1582 Pope Gregory VIII introduced the Gregorian calendar (AKA the Western or Christian calendar) this advanced time by 11 days to bring it in line with Catholic perception of Easter and other observed days of that religion in accordance with Roman Catholic rule of that time.

Many countries saw the Gregorian calendar introduced under papal bull (Inter Gravissimas) as enslavement and ruling by the Catholic Church. It was considered a brutal invasive and controlling regime at the time by Orthodox, Protestant, Asian and Islamic countries. Greece was the last to accept the new calendar and adjusted their civil calendar by 13 days in 1923. None of the Orthodox churches recognize the Gregorian calendar dates for church or religious purposes to this very day.

What does a Tax calendar operating from the 1st to the 30th or 31st of a given month provide man when he is growing food and providing sustenance for his family? Confusion.

Quote "man is easily convinced and financially controlled" Rothchild modern economics.
(an interesting quote from an interesting source)



NSW Rural Fire Service

Get Ready Weekend

Brett Ryan (Captain Uki Rural Fire Brigade)

In preparation for the coming fire season Uki Rural Fire Brigade is hosting an information session at the Uki Markets on Sunday September 15. Brigade members will have a gazebo set up and be available to discuss bushfire preparedness with members of the public.

This is part of the statewide awareness program 'How Fireproof is your Plan' to educate the public on the dangers of bushfire and how to prepare in advance for such an event.

The new fire truck will also be on display during the



FAR NORTH COAST
(Ballina, Byron and Tweed Shires)

24 HOURS BEFORE YOU LIGHT ANY FIRE, YOU MUST CALL THE
BURN NOTIFICATION LINE
1300 632 174

**HOW
FIREPROOF
IS YOUR PLAN?**

FIND OUT IN 5 MINUTES AT
MYFIREPLAN.COM.AU



markets. Uki Rural Fire Brigade is also seeking new volunteers. If you have been considering a volunteering role in the community there will be opportunity for anyone interested to discuss the options with Brigade members.

NSW Rural Fire Service has provided important information leading up to this fire season. The BURN NOTIFICATION LINE and MYFIREPLAN.COM.AU help keep our communities safe this fire season.



Cacey Blackburn Breathwork

(Dip. Couns., Trained English Herbwitch)
Long term student of Leonard Orr, Pauline Win and
Sondra Ray. Internationally trained, 17 years exp.
Practising Earth, Air, Water and Fire

- **Breathwork Courses**
- **Psychic Readings**
- **Plant Spirit Medicine**
- **Private Sessions** 0431 598 989

Servicing: Cabarita, Wollumbin (Australia), Glastonbury (UK)

caceyj@gmail.com

www.seahorseoracle.com

@seahorseoracle

CTC@Uki

Community Technology Centre

The Buttery

1454 Kyogle Rd Uki
P.O. Box 3404 Uki NSW
ctc.uki.nsw@gmail.com
Ph/Fax: (02) 6679 5399

ABN: 89 292 130 424

- @ Print Shop
- @ IT Assistance & Tuition
- @ Internet, Adobe Suite
- @ Office Services
- @ Web Design
- @ VHS to DVD
- @ Membership Available

Home thoughts from Abroad

John Tyman Holy Trinity Church

Arriving in England in April this year, I remembered the poem by Robert Browning entitled "Home thoughts from Abroad", because it begins with "Oh, to be in England, now that April's there". Much has changed, though, from the time I learned that poem in school. The elm trees referred to in the first verse died out long ago, and attitudes have also changed ... mine and England's.

Travel to the UK was a chance to meet with family and friends, but few remain. This time I was able to visit my one last sister, and four surviving school friends. I preached in my village church (a Saxon foundation) where I long ago preached my first and worst sermon! And I visited the village school (built in 1634) where the twin threads of my later life (religion and geography) were first interwoven. I also visited my parent's graves. But though there is an obvious sentimental attraction to the scene of my childhood, I no longer think of England as "home".

Even if I was told (as I have been in times past) that I should "go back to where I came from", I am unlikely to visit England; again, for two reasons:

The first is that Australia is now my home and where I belong. Listening overseas to travellers from other countries I was sometimes embarrassed by their idea of Australian politics. Many in England (sadly?) would like to copy our refugee policy, and some would be happier if their foreign aid budget was as pitifully small as ours. New Zealanders, having humiliated us in rugby, were conscious



that they now outclassed us in display of compassion; Canadians also. The only ones to share our shame were the Americans with President Trump.

The other reason why I am unlikely to travel overseas again is that insurance is terribly expensive when you are in your 80s with "pre-existing medical conditions". I can no longer justify the expense, as I do not need to go overseas again, and the money would be better invested in Oxfam, Doctors without Borders or the United Nations High Commission for Refugees. Much of my travel in times past was related to the preparation of teaching materials, for use originally in Australian classrooms and now on the World Wide Web.

Between England and Australia I spent almost 20 years in Canada. Having three passports (two of which expired long ago) I am insured against ever becoming a politician in this country! However, knowing that I could live in any of three countries, I feel for those who have none, who have fled persecution, war or famine in search of a new home ... and have instead been locked away on Manus Island and Nauru. The photos in the regular newsletters of the UNHCR, of refugees in camps overseas, must surely open the hearts of all those who have homes to return to when they travel. I have a home, and I know that I am privileged to live here. I simply want to see others so blessed.



Cave Electrical Est. 1967

All types of Electrical Work

Level 2 Metering, Overhead and Underground services
Installation and Repairs, Free Quote



Quality Solar Systems at affordable prices

Local business selling the best
major brands

Repairs & upgrades to existing systems
Call Mark Cave to discuss your renewable
energy needs

Free design and quote

Ph 6679 5999 Mobile 0419 001001



Sunbeam Solar are a local business who have served the Tweed and Byron shires for the past 21 years. We are committed to providing clients with solar power systems that suit their needs, helping to significantly lower their energy costs or in putting an end to their electricity bills

Government rebates are available for both types of solar, grid connect or stand alone systems. We offer competitive prices and installation of the highest quality. We have a track record of supporting our local clientele for over 20 years, providing back up service and warranties.

Our team is professional and thorough from jobs as small as sheds and houses to larger installations such as their recent 48 solar panel install at the Mullumbimby Rural Co-op.

For more information please contact:
sunbeamsolar@bigpond.com
(02) 6679 7228

Council Approval - Uki Village Gardens

Greg O'Donnell

After over 5 years of planning, community input and council discussions, Tweed Shire Council has granted a license for our community to have some gardens to grow vegetables and run other community activities!

The initial license is for 12 months followed by another 12 month license. Then if all goes well a 5 year license will be offered for the gardens. The facility is now officially called the Uki Village Gardens with the managing group being a sub-group of UKIRA (Uki and District Residents Association).

Our working bees will be the first Saturday of each month 9am to 12noon. The location of the gardens is between Smiths Creek Bridge and Uki Village beside the Tweed River. Parking is on the eastern side of Smiths Creek Bridge.

There is plenty of opportunity to get involved including planting, making garden beds and compost areas, applying for grants, constructing infrastructure, organising events and sourcing materials. So come along and get involved!

We are also looking for donations of seedlings, fruit trees, tools, building materials and equipment.

For more info see:

<https://www.facebook.com/UkiCommunityGardens/>
or contact Greg O'Donnell 0403 203 963.



Mavis's
Events Collective
presents

**FATHER'S DAY
CRICKET
CARNIVAL**

Sunday 1st September

Mavis's
Kitchen and Cabins

Mavis's
Kitchen and Cabins

**TWEED
GALLERY CAFÉ**

Bring this ad any time and receive a
free, freshly made Scone and Mavis's
home-made jam with every breakfast.

**COMING UP
@ Mavis's Kitchen**

Sunday 6th October
Mavis's Fringe Festival
Join us for the first of the late sunsets.
This mini festival of arts presents
theatre, comedy, music and cabaret.

Sunday 3rd November
Day of the Dead
Mexican Themed festival, live music,
Mexican food, art, dancers, candy skulls.
Pay homage to the departed

Go to our website for details www.maviseskitchen.com.au
for more info call 02 6679 5664 keep up to date  
Mavis's Kitchen 64 Mt Warning Road Mt Warning

ROAD WATCH - Fatigue can be Fatal

Jai Morrison

Research has shown that fatigue can be as dangerous as other road safety issues. Being awake for 17 hours has a similar effect on performance as a blood alcohol content of 0.05%. Fatigue is one of the three big killers on NSW roads. Fatigue related crashes are twice as likely to be fatal as drivers who are asleep can't brake.

From 2013 to 2017, more people died in fatigue related crashes than drink driving crashes, but unlike drink driving, there are no laws regulating driver fatigue for car drivers and motorcyclists, so public education campaigns are currently the only way to address the issue.

Avoid fatigue crashes by recognizing the early warning signs; yawning, poor concentration, sore or tired eyes, restlessness, drowsiness, slow reactions, boredom, oversteering. Don't wait for a micro sleep - by then it is too late. Avoid driving late at night when your body will naturally want to sleep. Find out if any medicine you are taking may affect your driving.

Planning a long trip; before you drive, get a good nights sleep, arrange to share the driving, plan to take regular

breaks at rest stops. Pull over in a safe place for a nap, 20 minutes works best. Stop for coffee although the effects of coffee won't help for long and doesn't work for everyone. Even if you don't feel tired, take regular breaks to avoid becoming tired.

Remember that sleep is the only way to overcome tiredness.



TWEED SHIRE COUNCIL

Notices

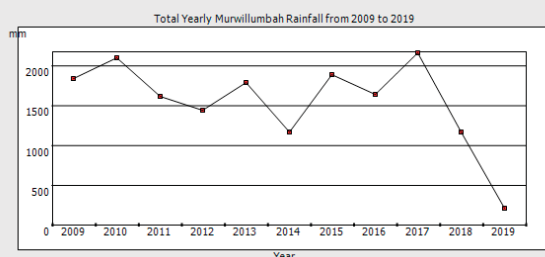
BYRRILL CREEK:

Construction of the new bridge is ongoing to the mid/end of August. Work to complete the road approaches and barriers on the new bridge are continuing and this job is now extended to end around mid August.

MOUNT BURRELL:

Road construction Kyogle Road.

RAINFALL STATS: from BOM Weather Station at Bray Park. (2019 figures are for the 3 months to March only).



YEAR	JAN	FEB	MAR	APR	MAY	JUN	JUL	AUG	SEP	OCT	NOV	DEC	TOTAL
2009	223	220	158	260	328	179	11	0.4	21.2	171.4	78.8	194.4	1845.2
2010	103.5	332.3	153.2	137.1	122.4	58.9	55.3	57	71.8	446.2	70.4	499.9	2108
2011	254.6	143.8	131	308	58	45	33	157	17	132	128	216	1623.4
2012	583	204	158	216	17	118	7	0	0	14	21	107.1	1445.1
2013	478.4	346.5	240.4	107.6	59.4	146.5	103.6	6.9	50	51.6	191.9	17.8	1800.6
2014	98.6	15.2	364.6	51.6	39	33.7	1.2	151	34	6.1	74.3	311.6	1180.9
2015	271	336	267	254	230	70	47	20	63	68	127	139	1892
2016	100	54	367	31	7	598.3	15	170.5	60	14	108.5	118	1643.3
2017	168	52	1071	23	108	235	26.7	1.8	2	216.2	132	141.1	2176.8
2018	73	177.4	204.3	60.9	18.7	41	16.1	42.5	50	310	37.8	140.8	1172.5
2019	2.4	43.1	175.8										221.3
Avg	214	175	299	145	99	153	32	61	37	143	97	189	1689



UKI ELECTRICAL SERVICES

Domestic & commercial installation & repairs
rewiring, meter board upgrades,
safety switches, smoke alarms, security systems,
telephone and data cabling

Level 2 accredited electrician

metering, service lines, connections

Quality workmanship guaranteed

phone George for friendly service & honest advice

ph: 66795915 fax: 66795910 mob: 0411 185 811

10 Church Hill Uki NSW

george.arronis@bigpond.com



Lic No 198531c

C J Woodcock Plumbing

All plumbing
Rain water tanks
Maintenance
Roofing
Drainage
Hot Water
Bathroom Renovations

Based in UKI—call Craig for 35 years experience.

Ph: 66795 405, Mobile 0428 795 405,

Email: cjwoodcockplumbing@bigpond.com

Uki Buttery Bazaar Entertainment

Sanna Grace Kenna



Uki Buttery Bazaar Market

To book a stall at the monthly Uki Buttery Bazaar please contact Lisa on 0487 329 150.

AUGUST Buttery Bazaar

Sunday 18th AUGUST

Mod Love Duo

Chana Waters with her powerful and soulful vocals, along with Benwaih Le Blancs' phat and fabulous guitar sounds together make an awesome musical collaboration. A mixture of originals and classics, expect to be dazzled. Chana's continuing dedication to supporting young emerging performers will be showcased here today.



Valley Records

The lead guitarist is Matt, the vocalist is Gemma, Billy on the Bass, and the drummer is Elias. The kids all attend Mount Saint Pats high school in Murwillumbah. The boys have been playing for over 18 months together, Gemma has recently joined the band as the vocalist. The kids sing a variety of different music.



44 Red Apples

Is a rock/blues inspired band that formed at Tweed Creative Studios as part of a youth initiative in December 2018. Featuring Finn Nahrung (13) from Aetaomah School on lead vocals and rhythm guitar, Lachlan Murray (14) from Murwillumbah High on lead guitar and Max Morton-Rowthorne (14) from Mt. St. Pats on drums. The band started @ Tweed Creative Studios all doing individual lessons during the year. As the end of 2018 approached, the Studio was preparing for their end of year concert and organised the boys to create a band around Finn. The concert was so great that the boys continued to play as a group and have gone from strength to strength performing at different events around Murwillumbah. The band has supported Round Mountain Girls and picked up other gigs along the way and are looking forward to the Uki Markets in August.



SEPTEMBER Buttery Bazaar

Sunday 15th SEPTEMBER

Melissa Black and guests

As a woman, a mother, a grandmother, a musician, environmentalist, a feminine warrior, Melissa is one with the earth and through her music tells of her journey and stories.

Born at the base of an ancient Caldera, Nimbin, living in an ancient rainforest in Tumbulgum, Melissa's journey has come full circle in a breathtaking hush deep in the takayna/Tarkine rainforest beneath a red blood moon.

Piano driven songs supported by solid groove, understated guitars and a conversational vocal delivery which evokes the rich Australian landscape and an empowering feminine essence. This is The Eden Project. Melissa's new collection of songs speak of mountains and seas, personal journeys, healing and above all our need for a heart centred connection with each other and mother earth. Melissa journeyed deep into the remnant of the super continent Gondwana to the takayna/Tarkine wilderness to connect with an ancient land, its people and

bring to light the importance of preserving this wild land for future generations. The Tarkine region is the largest unprotected tract of rainforest in the world.

The supporting short film 'Merging with takayna' and the visual clip for the title song 'Eden' was conceived, captured and created by a group of women who stood united to bring awareness to the takayna region and can be seen on Youtube. Both films feature songs from Melissa's EP The Eden Project.



Uki Community Trading Table



Aylar Davies

Once upon a time in the UKI village, we had an amazing community table! Every Saturday morning folks would come and bring their home baked goods, eggs, herbs, excess fruit and veg from their local organic, spray/free gardens to the hall. It was a creative colourful table and a real gift to our 'community' spirit. So, a few of us got chatting recently and have decided to bring that little table back.

The first Uki community 'Trade' table was held on Saturday July 20th and we set up next to the Bread stand in the Hall. The table is a bit different this time round; in that it is purely a SWAP or DONATE arrangement (No money is exchanged). The idea was met with great enthusiasm and people bought homemade cakes, flowers, citrus, herbs, ginger, artisan crafts, bags of greens and someone even traded tool sharpening! Think imaginatively, firewood? seedlings? honey?

So, if you have any excess garden produce, craft, skill or service and wish to GIVE or TRADE, please come and get involved in creating a unique way to express our gratitude for each other. Just drop off what you have, or a flier or business card to advertise your skills and services to trade

for something else. If you don't have anything to trade but want to get involved you can always buy something from one of the other stall holders at the market and trade it at the table. This makes the abundance go round and round!

Let's grow our community with what we can supply for each other and warm our hearts!.. Maybe even leave with a CAKE! or shoulder massage!

Please drop off your offerings no later than 9.30 (as it makes the set up easier).

Any questions please call 0438 566 156



A few truths about water mining (cont. from page 2)

to 32 trips per day will result in an increase in road traffic noise levels of less than 0.5 dB at the existing dwellings along Kyogle Road which is considered negligible and has therefore not been assessed in detail within this report."

Just so you know, the water trucks have a noise output of about 82dB.¹ That's unloaded and without compression braking being added to the mix. Our community does not need the truck noise at any time, let alone all hours of the day and night.²

Environmental issues:

The statement of environmental effects is utter nonsense.³ All the bollocks. We keep getting hit with these:

1. *But horse floats, cattle and dairy trucks use the roads*
 - True, but they serve productive industry and provide community benefit. Their frequency bares no comparison to the movements of water mining trucks. They don't operate at night. You can live with that.
2. *Allegedly, Ms Martin stated they used much more water when they ran dairy cattle.*
 - No, you didn't. The water stayed in the environment it served, you didn't extract groundwater when it rained, you certainly didn't truck it off to be put into disposable plastic bottles.
 - And how would you know? Meter readings?
3. *It's OK there's plenty of water there.*
 - No it isn't OK. The hydrogeology in three of four prior environmental assessment reports over three water extractors was written by one person, a mining geologist. Even the Chief Scientist's Interim Report⁴ earlier this year stated there was no scientific substantiation for the amount of water extracted. None.
 - The groundwater system extends well beyond the

water mining applicant's property. Using their own logic, perhaps everyone in the community should bill them for water taken from under our properties.

4. *If the Council Officers recommend its approval it must be OK*

- Not so. The job of the Tweed Shire Council's staff is to recommend (or not) approval based solely on whether it conforms to the NSW Local Government Act 1993. It doesn't mean it's scientifically sustainable or even close to being OK. The public interest test would say otherwise and we have clear expectations councillors will vote in the public interest.
- The pesky Section 89 of the act states;⁵
(3) Without limiting subsection (2), in considering the public interest the matters the council is to consider include:
(a) protection of the environment, and
(b) protection of public health, safety and convenience, and
(c) any items of cultural and heritage significance which might be affected.

Please remember there is no justification for this industry, no community benefit, nothing. Please remember the Rowland's Creek Road operation is lined up to get going too.

1. https://www.veolia.com/anz/sites/g/files/dvc2011/files/document/2017/06/Clyde_Transfer_Terminal_-_Truck_Noise_Monitoring_Report_11_20160817.pdf
2. <http://www.industrialnoisecontrol.com/comparative-noise-examples.htm>
3. <https://tweedwateralliance.files.wordpress.com/2019/07/da190346-statement-of-environmental-effects.pdf>
4. https://www.chiefscientist.nsw.gov.au/_data/assets/pdf_file/0017/216224/Initial-Report_Independent-Review-on-Bottled-Water.pdf
5. <https://www.legislation.nsw.gov.au/#/view/act/1993/30>

Pat Miller



Dum Dum School 1918 - 1956

Esma Thompson

An application for a school at Dum Dum was made in 1916 with a list of 40 children's names wanting schooling at Dum Dum.

Mr Buchanan leased part of his farm for the school. Mr Alfred Modini from Murwillumbah built the school for £284. The school was completed in 1918 and a teacher was appointed.

In December 1918 a picnic was organised at the creek bank in Mr Buchanan's paddock. The usual games were undertaken along with the biting of the apple out of the tub and creating much amusement the hunting and catching of the greasy pig. The picnic was catered for by the local ladies and the children enjoyed eating ice cream from Murwillumbah. To encourage the children in the appreciation of their school work, a suitable book was presented to every child.

After the First World War ended trees were planted by the pupils to represent PEACE. Petrastrim, Eucalyptus, Acacia and Cassia Pines were planted on the side of the school near the road (in later years these trees were removed).

As the school was proving to be viable (number of children attending) the parents wrote to the Department requesting a school residence be built. During flood times the teacher had to cross to the school on a wire, taking considerable risk to his life in doing so. Mr Buchanan originally agreed to sell the land for the residence for £15 but he was induced by the inspector to donate the land. The school teacher's residence was built by Mr Frank Spencer of Kunghur for £898/10/- in 1924.

School attendance fell and the school closed from June 1935 to September 1936. Children who lived two miles away from the Dum Dum School on the slopes of Mount Warning had to cross many creeks and travel on bad roads so they did not go to school during the year of the schools closure. Other children travelled by truck or mail car to Uki School or to Murwillumbah.

In 1938 there were 23 children in attendance. The school and residence were painted and repaired for £203/8/10 in 1939.

Notice 10th April 1947: that while ever the attendance warrants it the Department will continue to appoint a married teacher at Dum Dum School.

From 1951 to 1955 the school was renamed MOUNT WARNING SCHOOL.

The school closed 12th June 1956. For a number of years after the school closed it was still used at election time as a polling booth. This ceased after the school became a store room for seats and desks. The furniture branch had two staff based in Lismore. They repaired and varnished school furniture and stored surplus furniture at Dum Dum until required elsewhere.

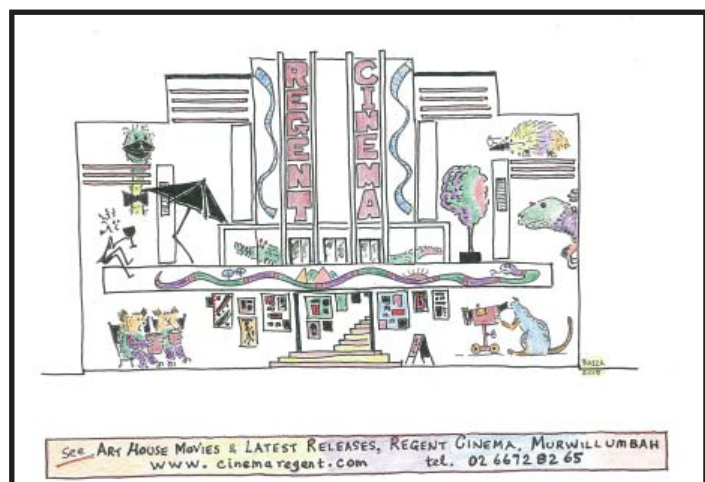
For more information or enquiries, the Historical Society is open Wednesdays and Thursdays 10am to 3pm. Visitors are welcome.

Contact: Esma Thompson (secretary)

Ph: 02 6679 5890

Ph. AH: 02 6679 9121

Email: trmuki@tweed.nsw.gov.au <<mailto:trmuki@tweed.nsw.gov.au>>





Sound Production
Mobile Stage Hire
P.A. Hire
Festivals & Events
Recording & Post
video & Stills
Graphic Design
Multi-media
Work-shops
Jake - 0266 795 645
mob - 0455 208 443
channelfree@hotmail.com
www.kitnaboodleproductions.net

Betty's Story - Queens visit 1954

Esma Thompson

Queen Elizabeth and Prince Philip visited Lismore in February 1954. Bob Brims took a bus load of Uki Public School and Uki Convent School children to the Lismore Showground to see the Queen.

Betty Brims took her Holden car with a load of Uki Red Cross ladies who were to assemble in a dedicated area for Red Cross members to meet and greet the Queen in a Lismore street. Betty wore a new outfit for the occasion - a mustard coloured pin tucked dress with covered buttons.

When Betty was travelling home after the Queen's visit, she came across Bob's bus stopped on the side of the road just outside Bangalow. Jock Robson (the Principal of Uki School) got off the bus and told Betty that they were missing a little girl who they believed had been left at the Lismore Showground. It was decided that Bob would continue on home with the rest of the school children along with some of the Red Cross ladies, while Jock, Betty and Noreen McNellie would travel back to Lismore to find the missing child. Ella Mitchell loaned Betty her green coat to keep her warm as the weather was cold from the continuing rain.

On the way back to Lismore, Betty got to Eltham and met Don McLennan, who was travelling in the opposite direction in a Studebaker car. Don's car came around a corner on the wrong side of the road. Betty pulled over to the side of the road but Don side-swiped Betty's car slamming it across to the extreme edge of the road. Betty got out of her car and was in such a state of shock she said to Don "What were you doing on the wrong side of the bloody road?" The police were called and Betty spoke with a lovely young constable called Pomeroy. While Betty was waiting around for things to be sorted out with Don and the police, she spent some time standing in the rain. The colour from the green jacket she had borrowed ran into her lovely new mustard coloured outfit. Both cars were eventually towed to Lismore.

It was discovered that the supposed missing little girl whose surname was Foord had been picked up by her parents who neglected to inform anyone. At this time Mrs Dickson from Doon Doon came along in her Dixon-Vanguard car and asked Betty how she was going to get home. She told Betty that seeing she had been involved in an accident Betty needed to get in the driver's seat and off they went. The rain continued to fall and when they got to Mooball the road was flooded. The car could not get through the flood waters so they boarded the train from Mooball and travelled to Murwillumbah. As Bob had left for home earlier in the day he managed to get the bus back to Uki, but Betty was marooned in Murwillumbah. She was overwhelmed with what had happened to her during the day and immediately burst into tears. Luckily she was able to stay overnight with her former employers Mr & Mrs Hardy and was able to travel home safely the next day.

An employee from the Murwillumbah Garage of Ebbott & Fenner went to Lismore the next day and brought Betty's car to Murwillumbah for repairs. In the aftermath of the accident a court case was held in Murwillumbah. Don was charged with negligent driving, but he disputed the evidence. Betty wore a white and pink polka dot dress with a pretty sheer pink overcoat to the court proceedings. After the evidence was heard Don was found guilty by the Magistrate.

For more information or enquiries, the Historical Society is open Wednesdays and Thursdays 10am to 3pm. Visitors are welcome.

Contact: Esma Thompson (secretary)

Ph: 02 6679 5890

Ph. AH: 02 6679 9121

Email: trmuki@tweed.nsw.gov.au <<mailto:trmuki@tweed.nsw.gov.au>>

Red Cross Update

Greg Armour

Uki Branch of Australian Red Cross held a very successful Street Stall and morning tea in Uki Hall on Friday June 7th 2019 raising over \$1600.00.

President Pauline would like to thank the valued members and volunteers who worked tirelessly throughout, keeping the morning flowing. Also a big thank you to all who donated cakes, scones, tea and coffee, and to those that donated wonderful gifts to sell on the stall.

The winners of the raffles on the day were; Des, June, Trinity, Joy, Louise, Marilyn, Diane, Trevor and Carolyn.

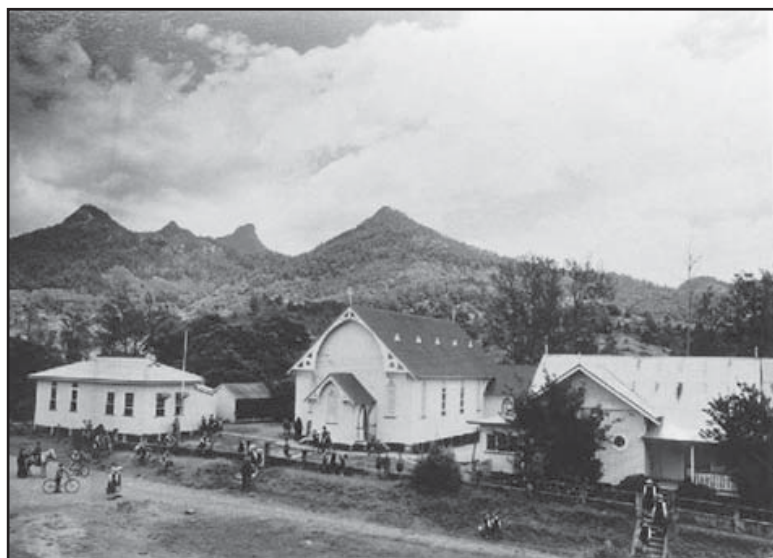


St Joseph's Convent School 1922 - 1963

Esma Thompson

Land for a Catholic Church at Uki was generously donated by Gerald Parker from a portion of his farm and was of sufficient size to accommodate not only a Church but to make provision for a future convent and school with playground and horse paddock facilities for the necessary "school ponies".

On the 9th June 1911 on the feast of Columba the foundation stone for the church was laid by the then bishop of Lismore Bishop Carroll. A priests room was added to allow the visiting priest overnight accommodation as the roads were little more than bullock tracks. In 1922 the convent was built in anticipation of the arrival of the Sisters of St Joseph (the brown joeys, from the order founded by "Saint Mary McKillop"). The School commenced in January 1923 with 57 pupils with the students being taught in the church and weather shed. The school took boarders as well as day pupils and taught classes through to Intermediate Certificate. It was not until 1930-1931 that the school building was built, financed by Dick Donoghue and Gerald Parker.



L/R: School, St Columba's Catholic Church & Convent
Photo courtesy Tweed Regional Museum, US000485

There were four sisters at this time, one teaching music, looking after the boarders and keeping house, one teaching in the single classroom, and one in the church and another one in the weather shed. There was also a playground and a horse paddock.

Marion Roberts started as a boarder at the convent in 1945 and remembers a "Yesterday, Today and Tomorrow" plant growing in the corner of the front garden and sometimes when the boarders looked there early in the morning they would find that the "Fairies" had visited during the night and left a lolly or toffee individually wrapped with their name written on it hanging from a branch.

In later years Mrs Julia Dixon of Doon Doon donated money to enable the addition of another classroom and verandah. This was one of the few schools in the area that had a school uniform. The school girls wore a navy serge

(wool) box pleat tunic with a white long sleeved blouse in the winter and a cotton navy box pleat uniform with a white short sleeve blouse in the summer. The junior boys wore grey shorts with a short sleeve grey shirt and the senior boys wore grey shorts with a long sleeved shirt and a tie.

In 1958 when Sisters Anita, Paul, and Teresa arrived at Uki, the Headmaster from Uki Public School Mr Jock Robson visited. Jock introduced himself and wondered if they had the key to the Uki Hall as the Church of England Ladies wanted it as they were off to the Masonic Temple to borrow the cutlery for the Convent Ball. He assured them the Convent Ball was the big event of the year and always raised enough money to support the sisters for the next year.

The declining number of pupils led to the closure of Uki Convent School in December 1963 and the building was transported to Kingscliff. In the 40 years the Sisters of St Joseph's taught at Uki over 600 day pupils and boarders received education from infant's grade through to intermediate standard. The convent was sold and converted to residential flats.

Freeman's Journal Thursday 4th July 1912:

His Lordship Dr. Carroll, Bishop of Lismore, recently blessed and opened a new church at Uki, near Murwillumbah, in the presence of a large congregation. Mass was celebrated by the Ven. Archdeacon Quinn, with a special choir for the occasion, organised by Mr and Mrs M. O'Kelly, who acted as conductor and organist respectively. Subsequently the edifice was blessed by the Bishop, who gave it the name of St Columba's Church, detailing the career of that great saint.

The church was erected and opened under remarkably singular circumstances-perhaps without parallel-in that not only was the whole of the money available for its construction before the contract was signed, but the committee had a surplus of something like £600 in hand to put by for future use. And this was achieved without having recourse to the usual subscriptions, etc. In short, the money was raised by the committee making a very profitable deal with the land originally required for a church site, which was sold for something like £1,500. A new site was acquired from Mr G. Parker, on the western side of Rowlands Creek, and this is where St Columba's Church now stands out prominently in the western perspective of Uki. The building was erected by Mr A. Modini, of Murwillumbah, at a cost of £660, and has given all-round satisfaction.

For more information or enquiries, the Historical Society is open Wednesdays and Thursdays 10am to 3pm. Visitors are welcome.

Contact: Esma Thompson (secretary)

Ph: 02 6679 5890

Ph. AH: 02 6679 9121

Email: trmuki@tweed.nsw.gov.au <<mailto:trmuki@tweed.nsw.gov.au>>



Astrology

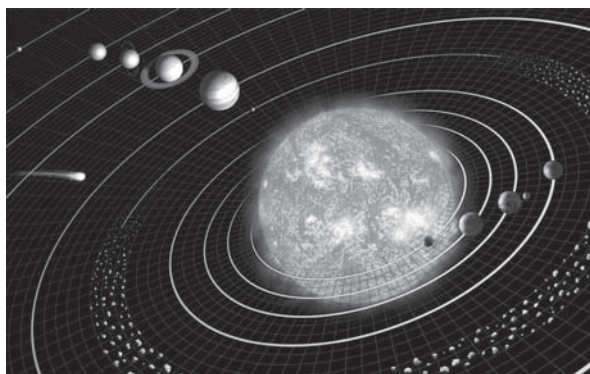
Paola Emma

August Astrology: a fresh start

By August 1 we will be leaving behind us the quirky retrogradation of Mercury, now again a more reliable Morning Star, rising before the Sun, encouraging clearer thinking and decisive action.

The Eclipse Season has also ended with the July Lunar Eclipse in Capricorn. The next Solar Eclipse will also be in Capricorn on Boxing Day 2019. The Cardinal Signs of Capricorn, Cancer, Libra and Aries (in particular Capricorn and Cancer) will be dealing still with life changing events and emotional upsets for a while longer. For many the times ahead could be less dramatic and complicated than the recent period.

The end of Mercury's retrogradation, on August 1, corresponds with the Leo New Moon, both events indicating the beginning of a new phase, when initiatives and plans may actually bring the results we are hoping for.

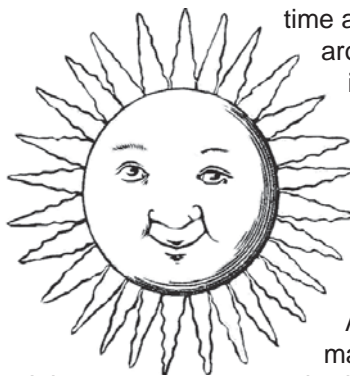


Jupiter Direct

On August 11 mighty Jupiter will also turn Direct, after his yearly four months retrogradation, beginning then the last league of his journey through Sagittarius that will end on December 3 with the ingress into Capricorn. A forward moving Jupiter will give new impetus to projects and aspirations that may have been kept in the closet for a while. Optimism and hope will brighten the days of many people, in particular those born under the Fire Signs of Sagittarius, Aries and Leo. To strengthen this trend Mercury will transit a Fire Sign too, Leo, between August 12 and 29, a brighter, more creative collective mind set.

Uranus retracing his steps

On August 12 Uranus will turn retrograde on the sixth degree of Taurus, turning direct only on January 11 2020, on the second degree of Taurus. This will ensure a continuing trend of unexpected happenings, amazing breakthroughs, difficult upheavals and even life changing events for those who have these degrees highlighted in their Birth Charts (and, to a lesser measure, the same degrees of the other Fixed Signs of Scorpio, Leo and Aquarius). If Uranus in Taurus is forming a conjunction, opposition or square (90 degrees angle) in your Birth Chart, especially with one or more of the so called 'Personal Planets' (the Sun, the Moon, Mercury, Venus, Mars, Jupiter, Saturn) this is a once in a life



time astrological event that could turn your life around, eventually helping you to strike a truer individual path beyond early conditioning and restrictions.

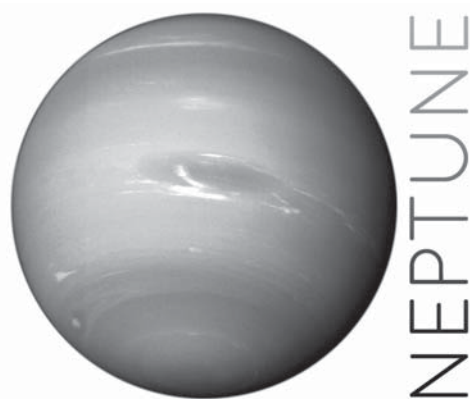
Highlight on Virgo

By the middle of the month of August the spotlight will shift to the Earth Sign of Virgo, with Mars entering this disciplined and practical Sign on August 18, Venus on August 21 and the Sun on August 23. These many planetary entities in Virgo, plus Saturn still slowly plodding through Earthy Capricorn, could be positive for working in a more methodical manner at any project generated by the Fire Signs creativity during the first half of August.

The highlight of this period will be the conjunction of Venus and Mars in Virgo, on August 25, encouraging romance and a pro-active approach to seeking new relationships and/or creative outlets.

September Astrology: the allure and danger of Neptune in Pisces

In September we will experience many oppositions of the Planets still transiting Virgo to mysterious and ambivalent Neptune in Pisces. Neptune is the archetypal power behind dreams, visions, spirituality, as well as illusions, delusions and deceptions of all kind. Venus will oppose Neptune in Pisces on September 4, Mercury on September 7, the Sun on September 10 and Mars on September 14. All these aspects will be strengthened by the last pass of the square between Jupiter and Neptune, on September 22, transit that has been with us, on and off, since January this year. While it could be easier at this time to let ourselves be swept off our feet by grand dreams and romantic wishes, a keen discrimination would be necessary not to be caught into emotional, mental or financial booby traps (Virgo to the rescue). We may dissipate a lot of our energy in chasing pipe dreams and riding tangents that may bring us nowhere in the end.



Positively Neptune may bring romance, poetical feelings, artistic inspiration and even spiritual experiences in our lives, opening our psyche to unworldly dimensions. It could be wonderful so far as we are aware of the danger involved and succeed in making a safe landing when this dreamy period is over.

We can celebrate the Libra Equinox and the advent of spring on September 23, at 5.50 pm local time.

please check my site livingmoonastrology.com for more Astrology.





**first
national**
REAL ESTATE

| Murwillumbah



Hi Everyone!

We NEED NEW LISTINGS!

We have clients wanting to move to Uki and surrounding areas for the Tree Change experience as we did 13 years ago.

If you have ever wondered what your property would be worth in today's market, give us a call for an appraisal. No Cost. No Obligation.

We are here for all your Real Estate needs

Quality service and professional!

UNBEATABLE Commission Rates!

Phone Marta: 0473231762 / Paul: 0448191351